

portfolio
of architecture and art



*“Architecture is basically a container of
something. I hope they will enjoy not so much the teacup, but
the tea.”*

- Yoshio Taniguchi

James C. Sloan

Bachelor's of Architecture, 2011
University of Tennessee, Knoxville

contact: jsloan3@utk.edu
web: www.jamescsloan.com





Table of Contents

Small High School: Laurel School for the Arts and Sciences

1

Medical Clinic: Halls Medical Professional Building

2

Integration Studio: Nashville Center for Sustainable Education

3

Large Urban Plan: Transit Oriented Development

4

Spatial Studies: Proun Project

5

Personal Work: Paintings and Process

6

Laurel School for the Arts and Sciences

"The experience itself has a satisfying emotional quality because it possesses internal integration and fulfillment reached through ordered and organized movement. This artistic structure may be immediately felt."

— John Dewey, *Art As Experience*

Studio:

Fifth Year, First Semester, Fall 2010

Professor:

David Fox

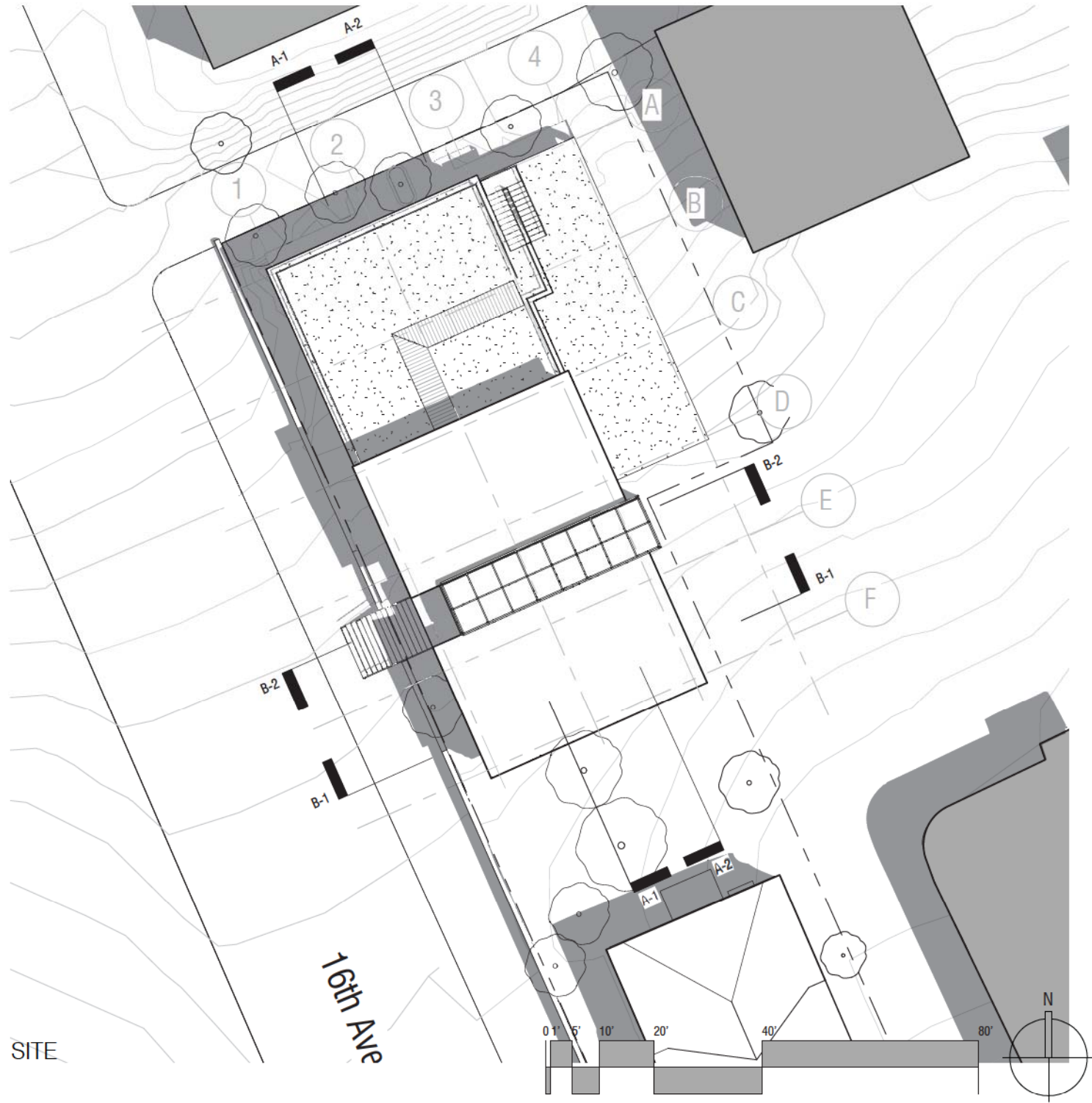
Site:

Knoxville, Tennessee

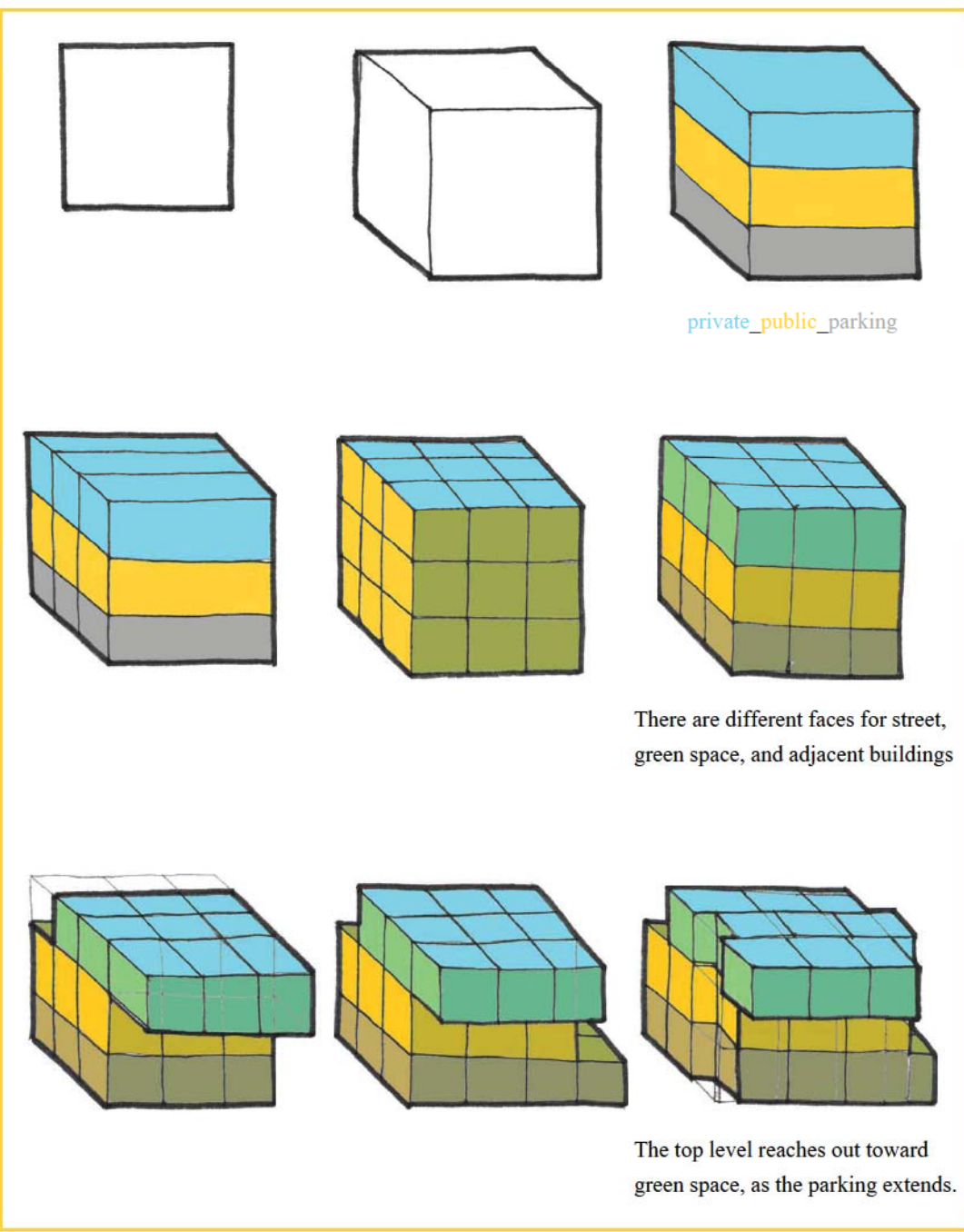
Project Description:

School currently operating out of a 3000 sf. house, needs 5000 sf. addition/ new bldg. Extra parking desired. Flexible spaces to accommodate students' diverse learning needs.

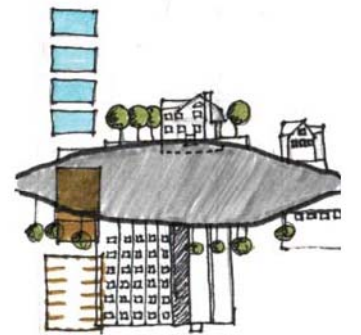


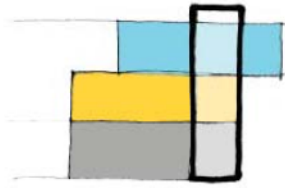
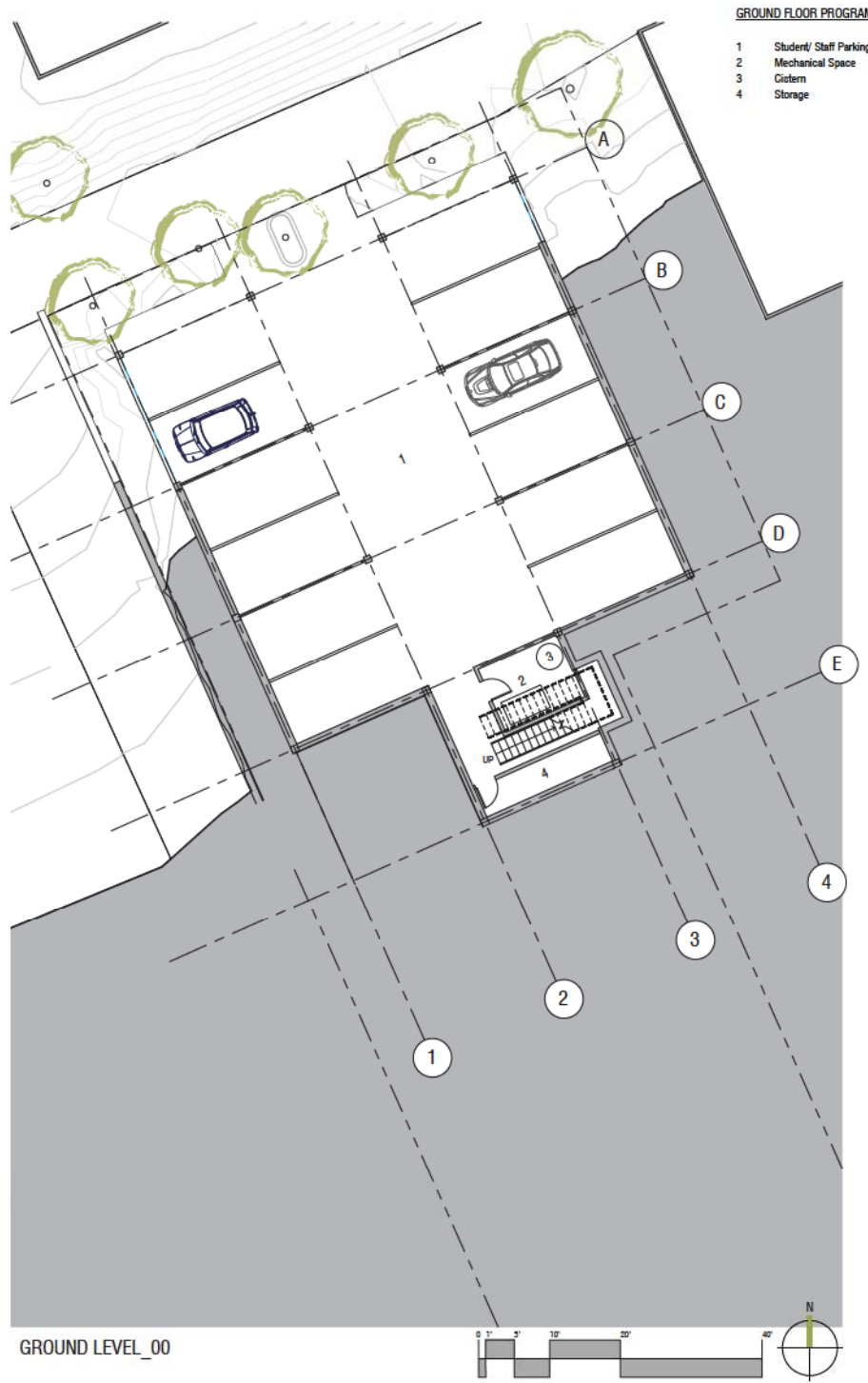


Laurel School for the Arts & Sciences



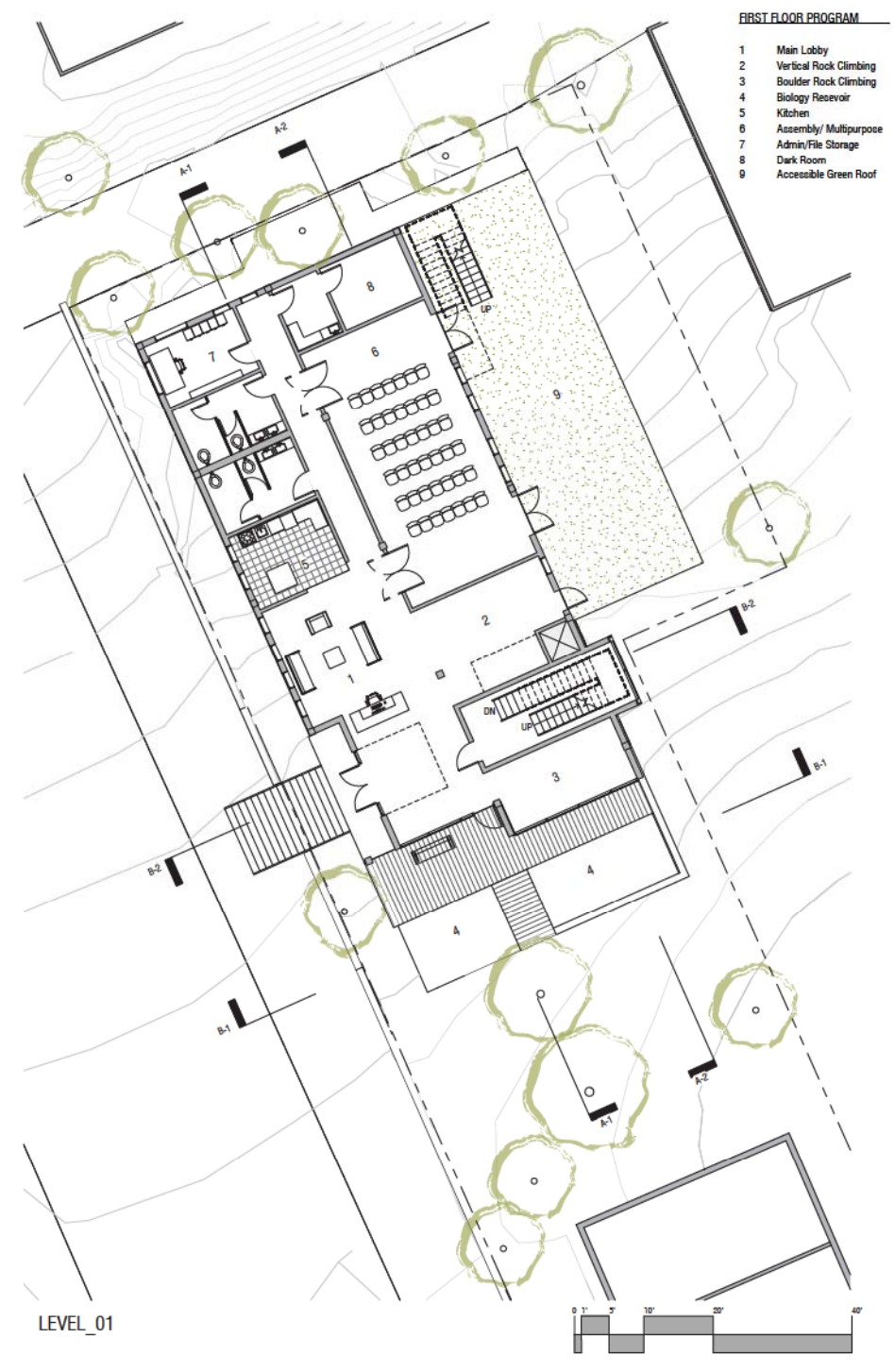
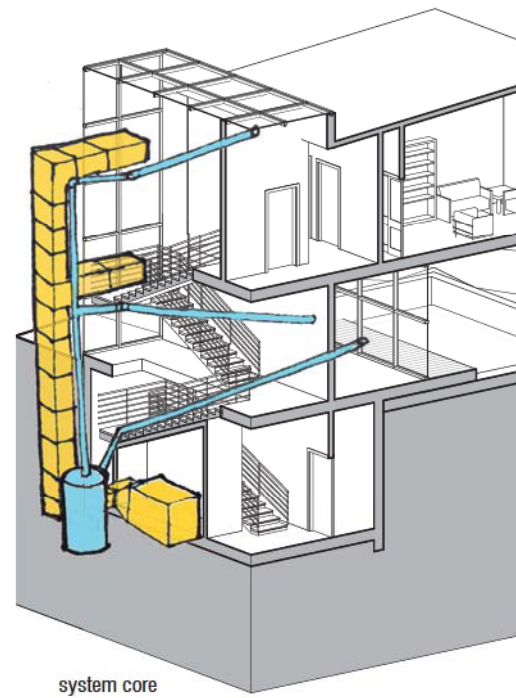
This alternative high school called for an adaptive design to accommodate multiple uses for each space, as well as the ability to expand when class sizes grow. A transformed cube creates these multi-functioned spaces, bringing a series of spaces together, interacting in plan and section. Indoor and outdoor, these spaces foster an environment for adaptive learning.





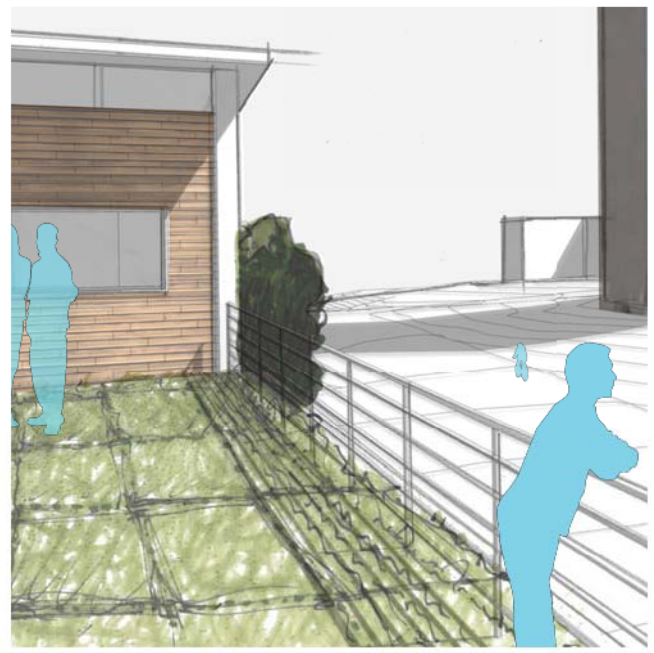
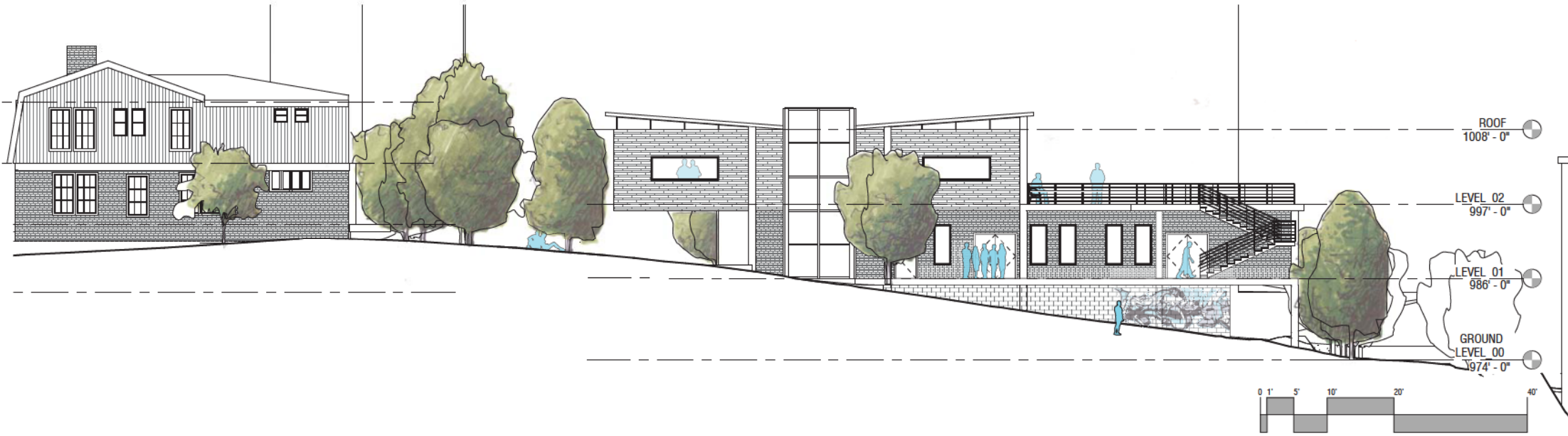
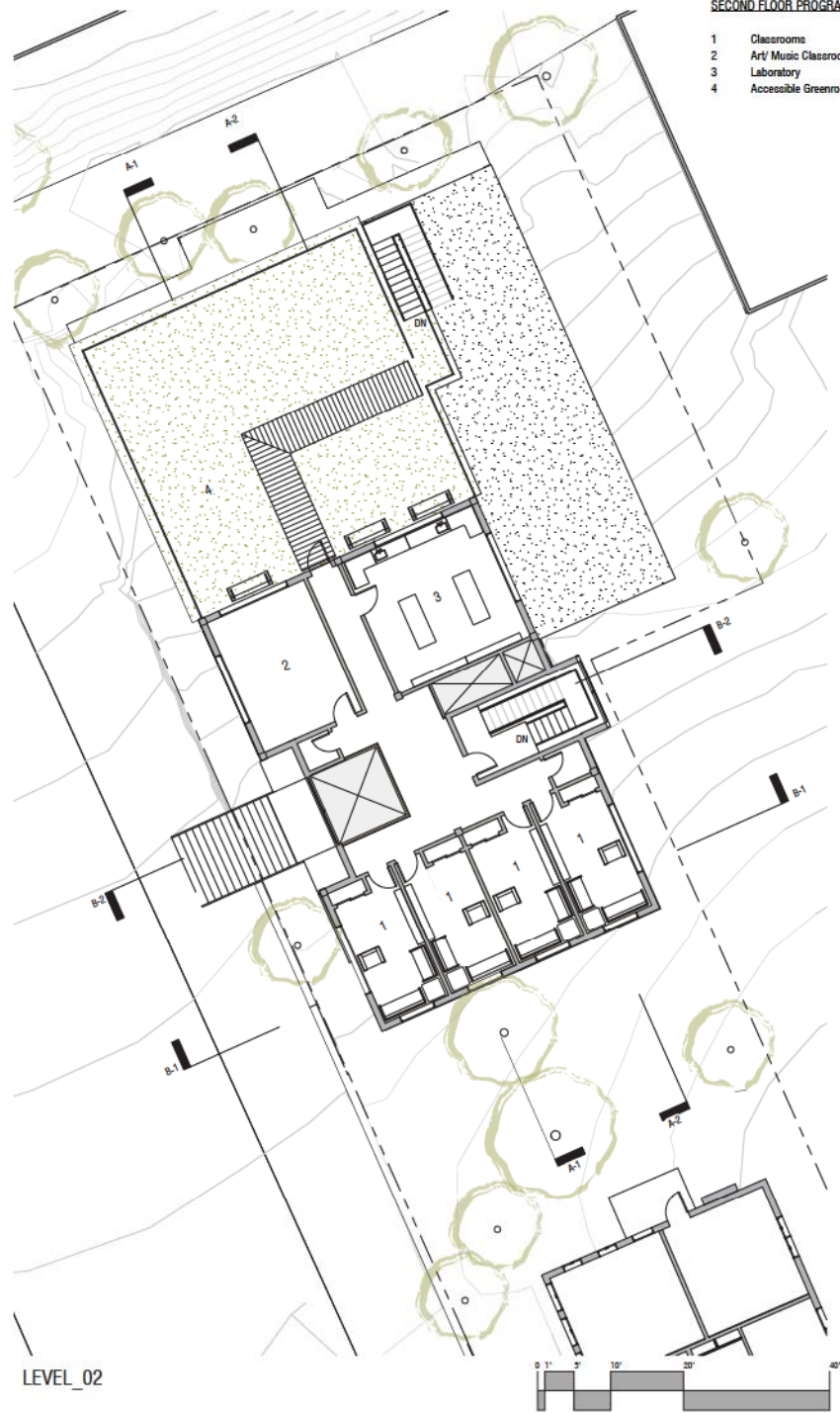
The circulation volume connects three levels.

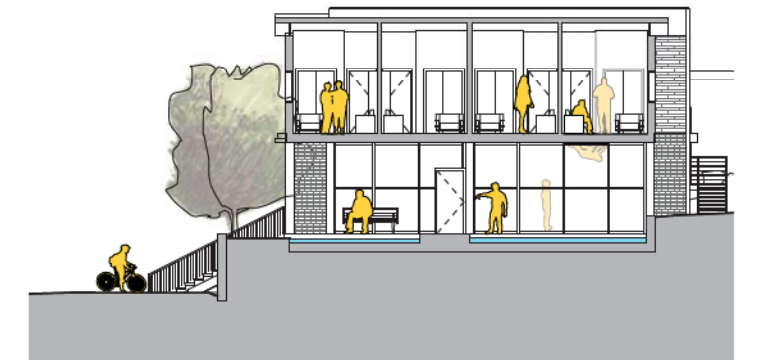
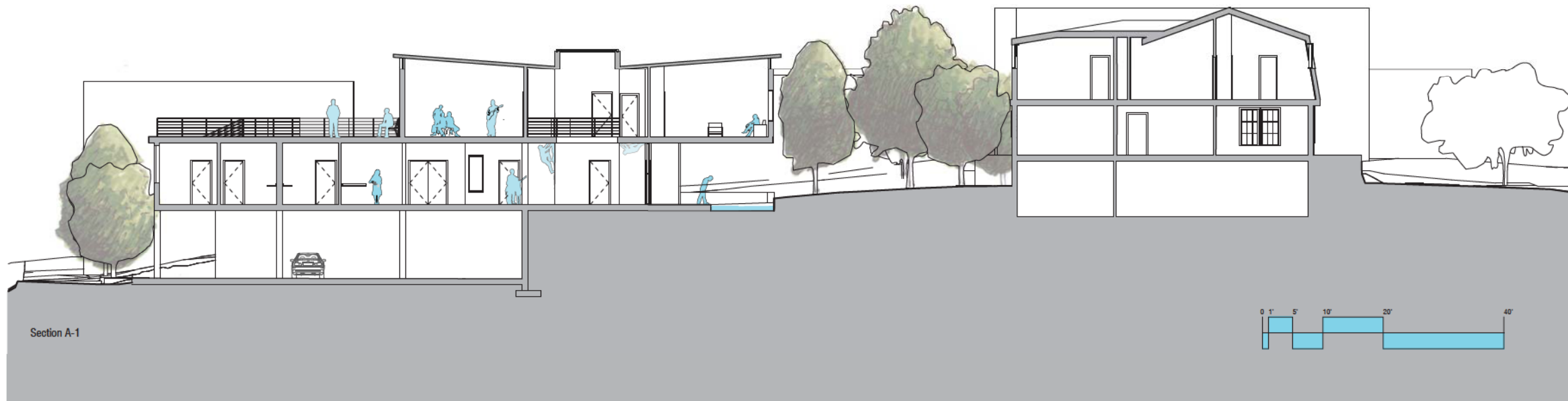
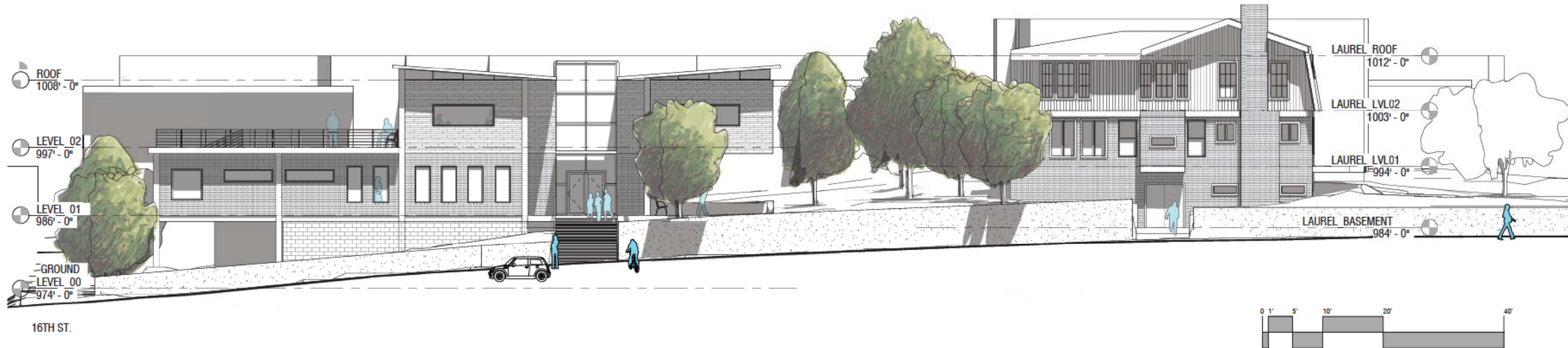
Rock climbing is a current interest of the school. The core of circulation has a rock climbing wall, and on the other side, functions as the shaft for mechanical systems.



SECOND FLOOR PROGRAM

- 1 Classroom
- 2 Art/ Music Classroom
- 3 Laboratory
- 4 Accessible Greenroof





Halls Medical Professional Building

“Architecture is an art when one consciously or unconsciously creates aesthetic emotion in the atmosphere and when this environment produces well being.”

- Luis Barragan

Studio:

Third Year, First Semester, Fall 2008

Professor:

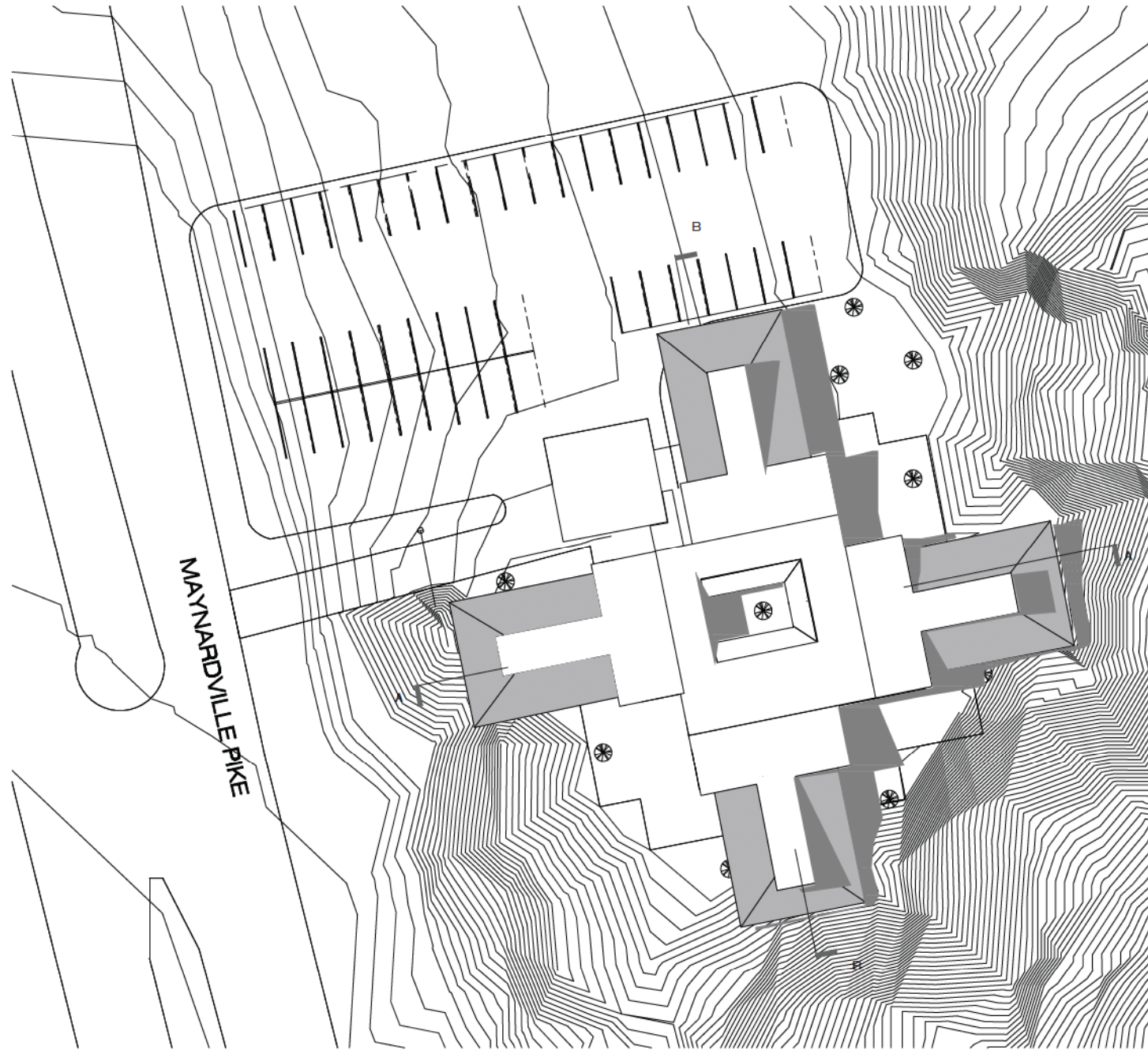
Dr. Scott Kinzy

Site:

Halls, Tennessee

Project Description:

Clinic currently in small office building, needs to move into another building, but maintain rentable space to lease out. There will be twelve patient rooms and six doctor's offices. A set nurse's station is to have direct view and access of rooms.



SITE PLAN: HALLS, TN

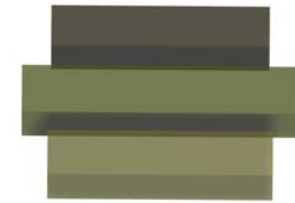
0 6'-0" 18'-0" 32'-0"



Halls Medical Professional Building

This design tries to deviate from the typical double-loaded corridor, while maintaining an ease of access for the nurses and doctors. It is intended to give each patient a view out, personalizing the visit. The dry garden is a perfect meditative view for those times spent waiting for the doctor.

The design's layout is inspired by the natural process and structure of a tree. The water moving from the trunk to leaves working as a metaphor for the patients moving in and out of the clinic. The doctor's offices, like leaves, are destination spots on the outside, taking in the energy from the surroundings. The nurses, the trunk of the tree, would have an access to all of the branches and limbs.



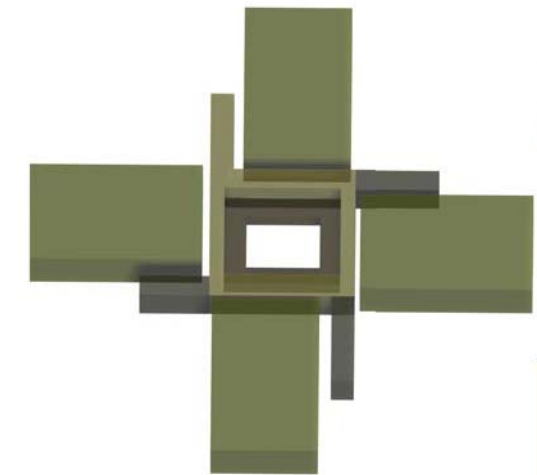
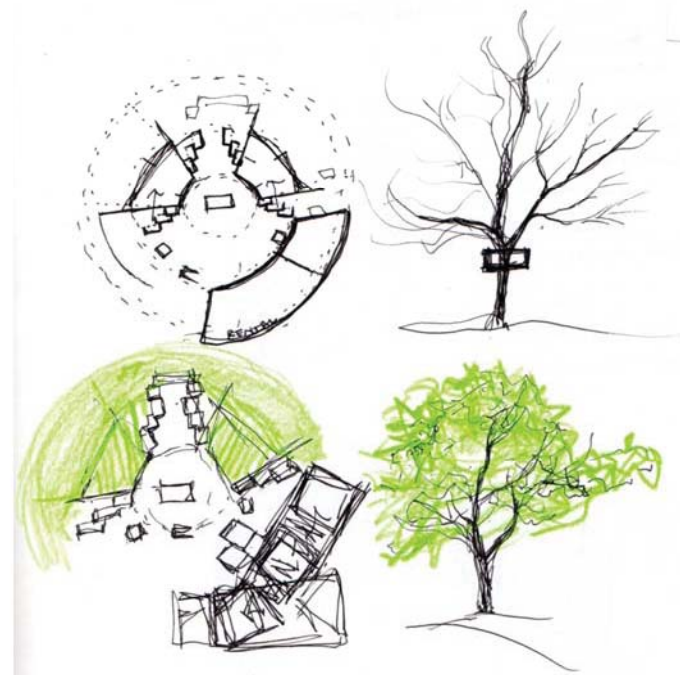
BASIC PROGRAMMING

- DOCTORS & STAFF
- BOTH
- PATIENTS



CENTRALIZED PROGRAMMING

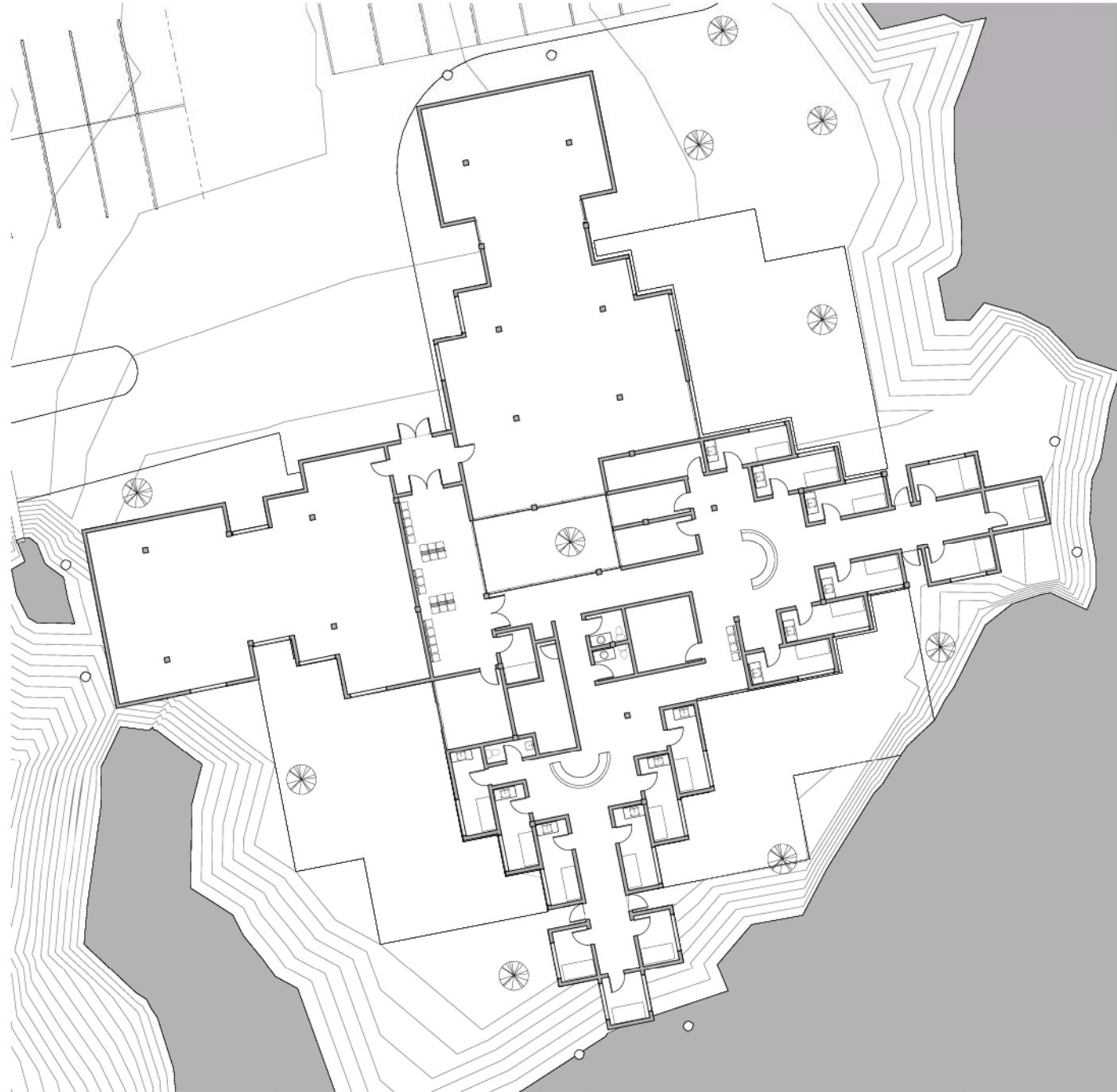
- DOCTORS & STAFF
- BOTH
- CENTRAL SPACE



CREATING VIEWS

- DOCTORS & STAFF
- EXAM ROOMS
- CIRCULATION
- VIEWS OUT



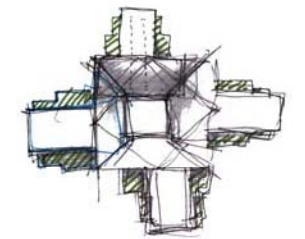
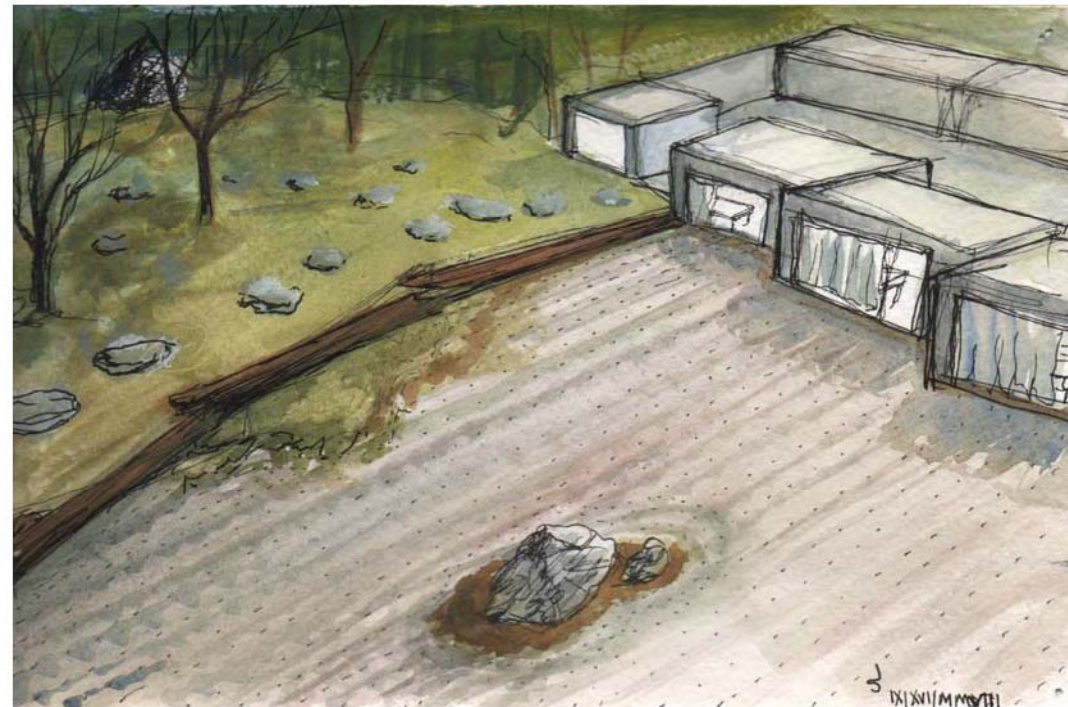


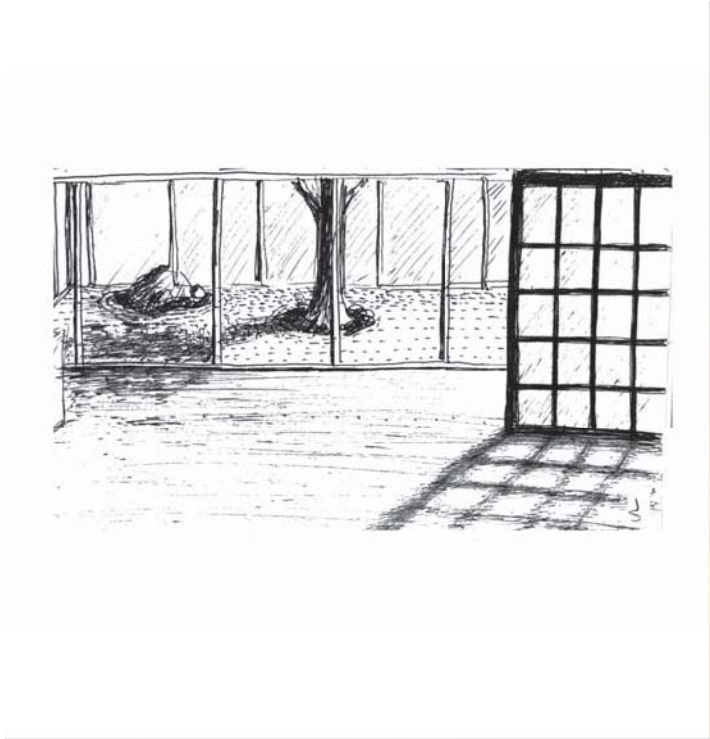
FLOOR PLAN 01

0 4'-0" 8'-0" 16'-0"



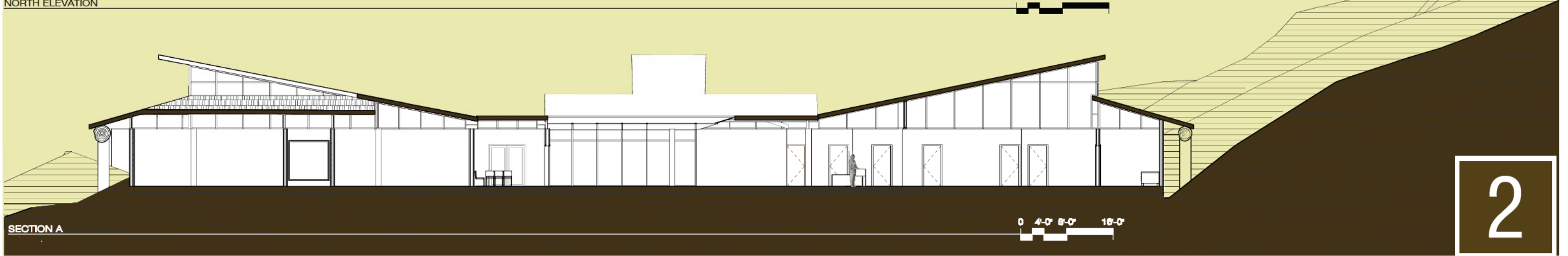
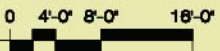
PROJECT
NORTH





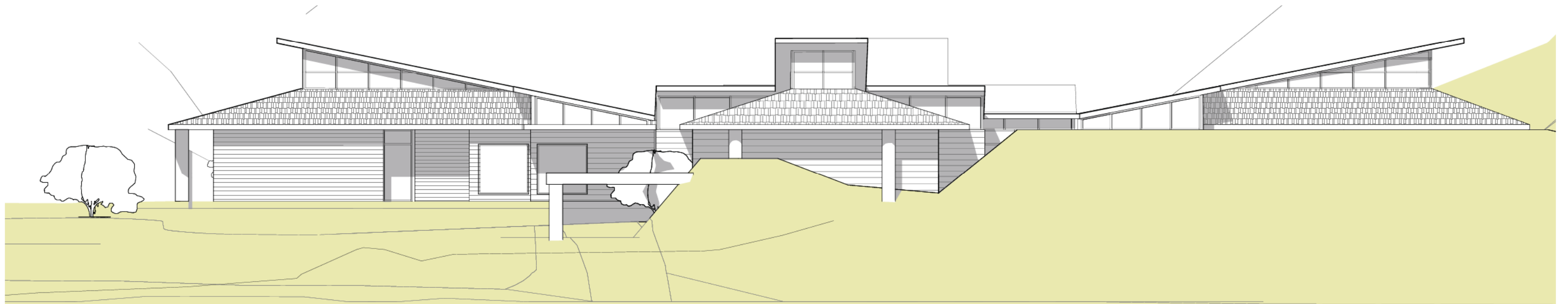


NORTH ELEVATION

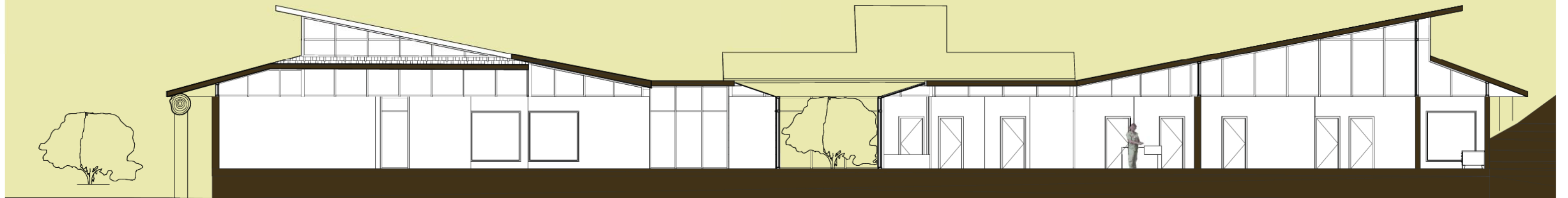
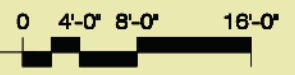


SECTION A





WEST ELEVATION



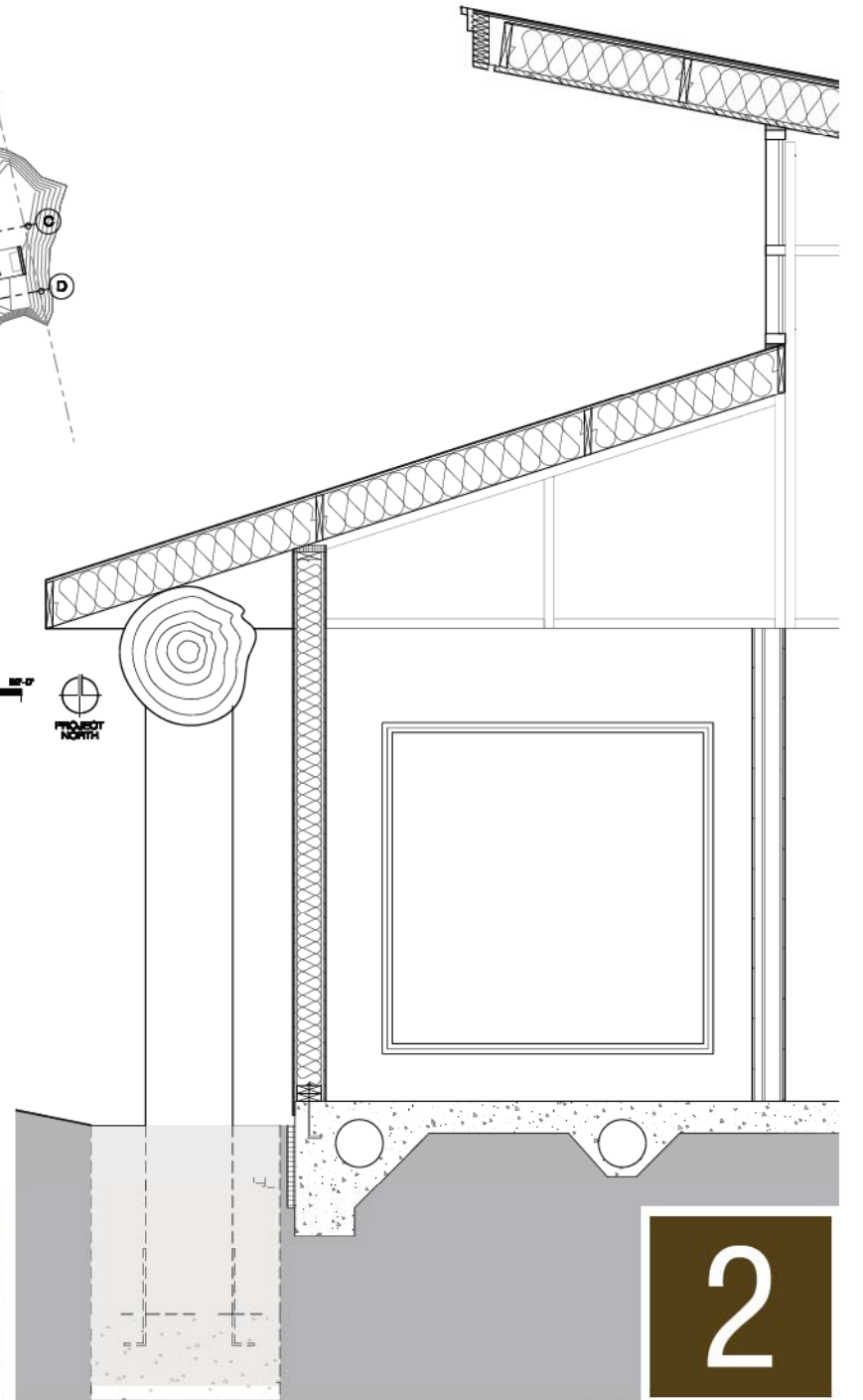
SECTION B





STRUCTURAL PLAN

0 1'-0" 2'-0" 4'-0"



TYPICAL WALL SECTION

0 1'-0" 2'-0" 4'-0"

Center for Sustainable Education

"It is only after we achieve a continuity of space that we can see architecture disappear, leaving behind only the experience of it."

- Kengo Kuma

Studio:

Fourth Year, First Semester, Fall 2009
Integration Studio

Professor:

Ted Shelton + Stan Rabun

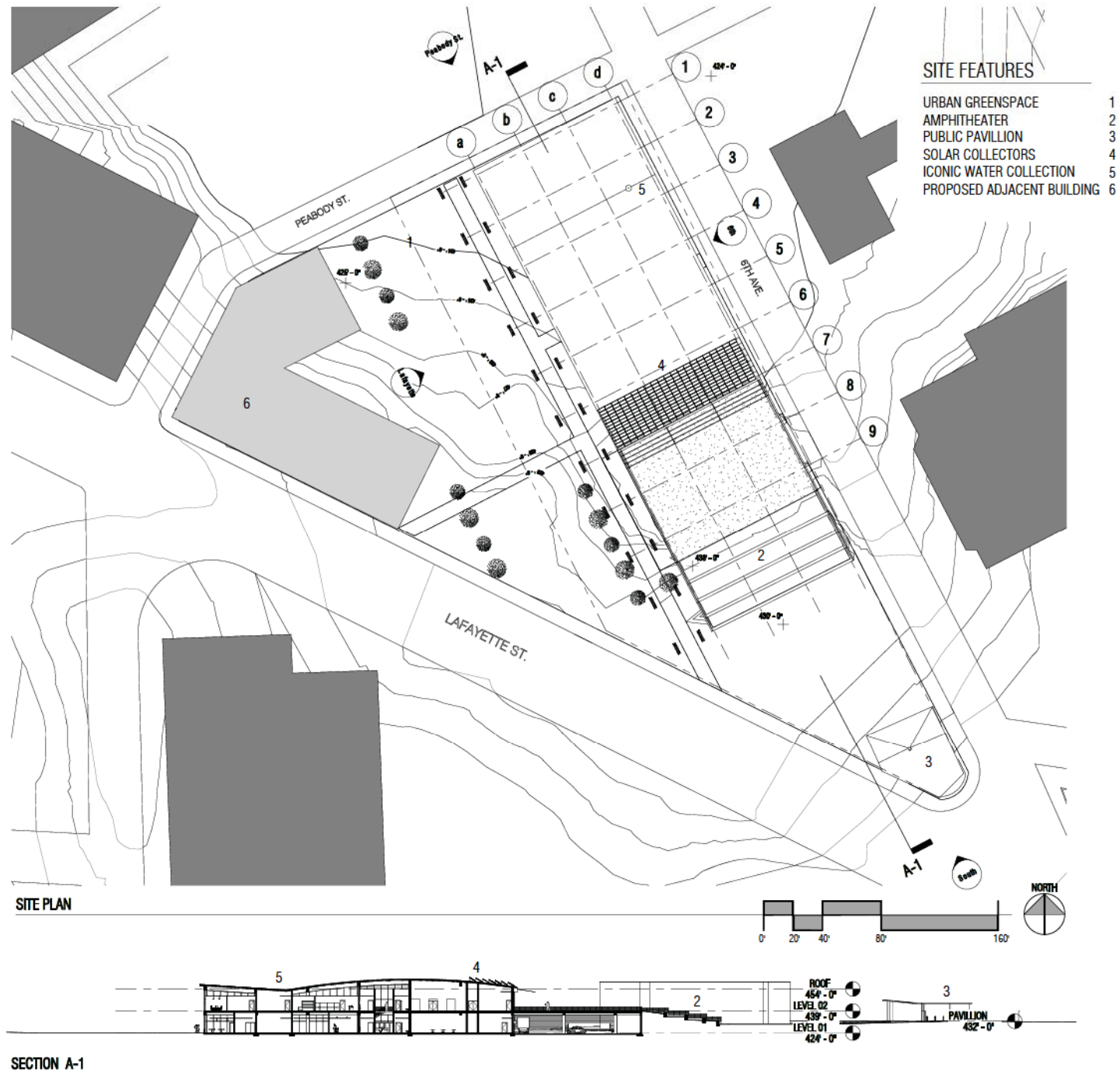
Site:

Nashville, Tennessee

Project Description:

A public/private partnership that would showcase and provide education on green building practices. Program includes:

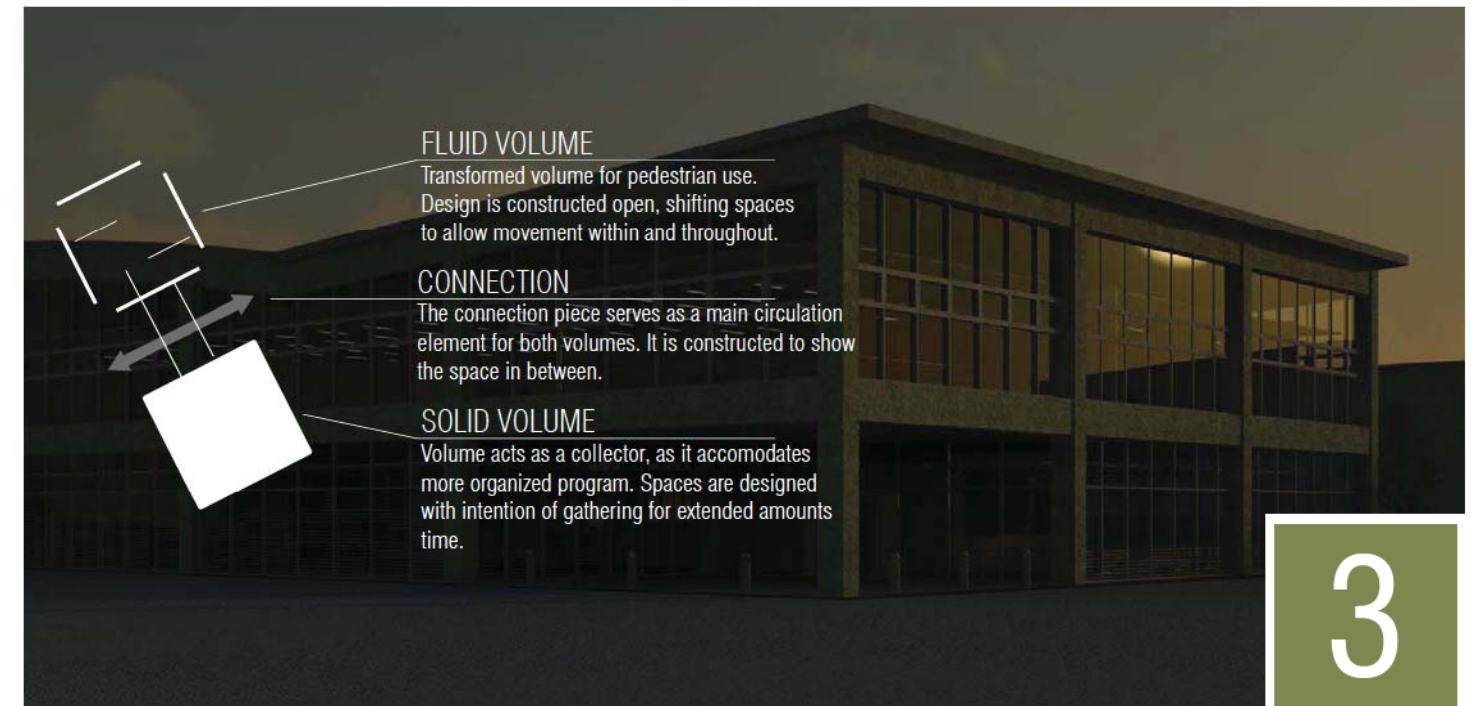
- Theater/auditorium space
- Gallery/interactive educational space
- Flex space
- Library
- Meeting rooms
- Conference rooms
- Offices
- Services areas
- Outdoor demonstration spaces



Center for Sustainable Education

The Center for Sustainable Education is part of the rejuvenation plan for downtown Nashville, Tennessee. It would be a destination spot along the proposed “avenue of sciences” leading down to the planetarium. The center will showcase green building products, educate building owners, contractors, developers, architects and the public on new technologies and building methods. The design incorporates enough LEED, NC aspects to potentially reach the platinum level, such as water collection, solar harnessing, and geothermal heating.

The building would be precast concrete with wooden louvers on one side, and mostly curtain wall with operable windows on the other. This creates the solid volume and fluid volume, respectively. The programmed areas were differentiated by the time spent by a visitor within one space. That is, areas of gathering and sitting would be placed in the solid volume, and areas of movement and impermanent exhibits are placed into the fluid volume.



FLUID VOLUME

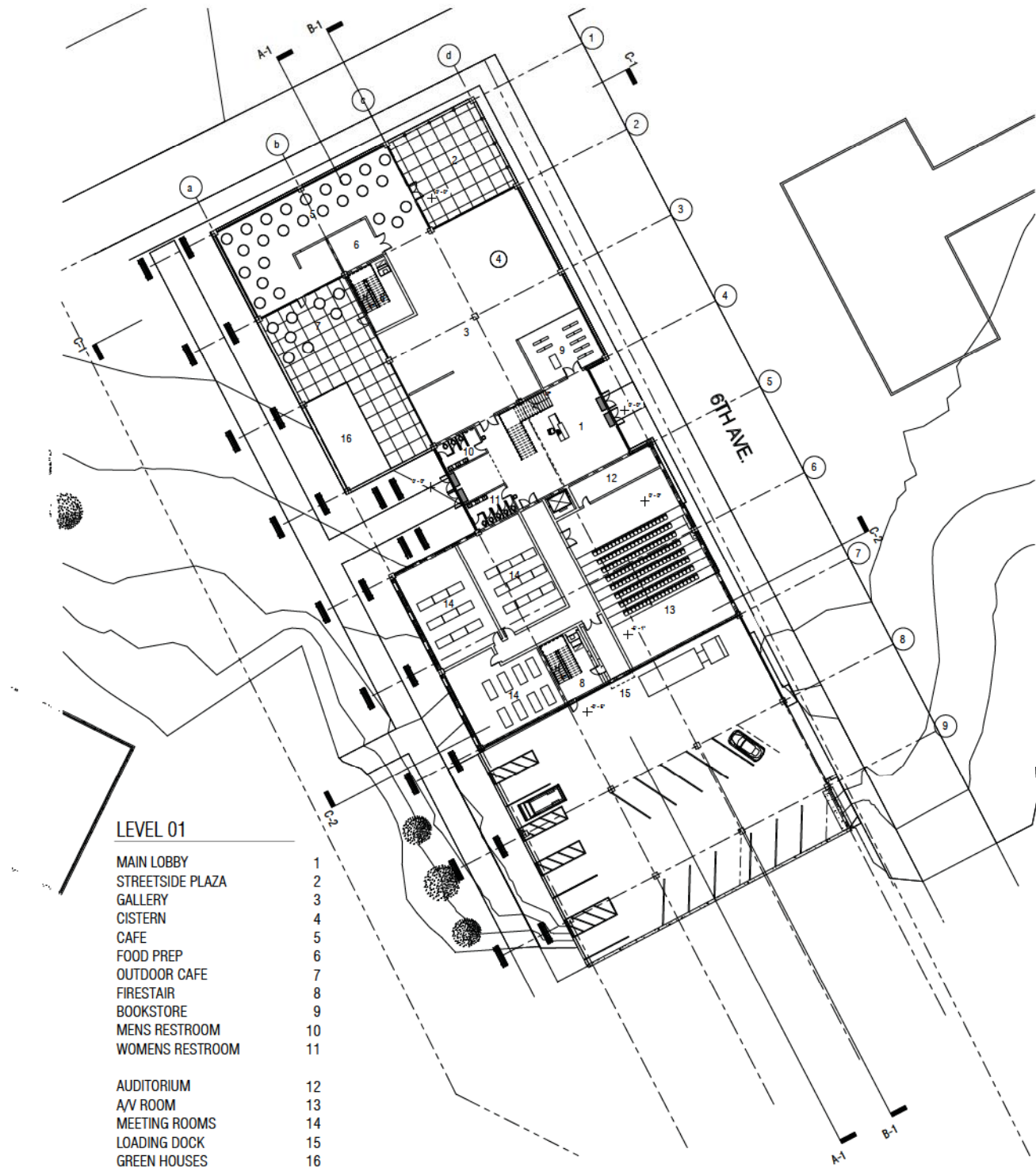
Transformed volume for pedestrian use. Design is constructed open, shifting spaces to allow movement within and throughout.

CONNECTION

The connection piece serves as a main circulation element for both volumes. It is constructed to show the space in between.

SOLID VOLUME

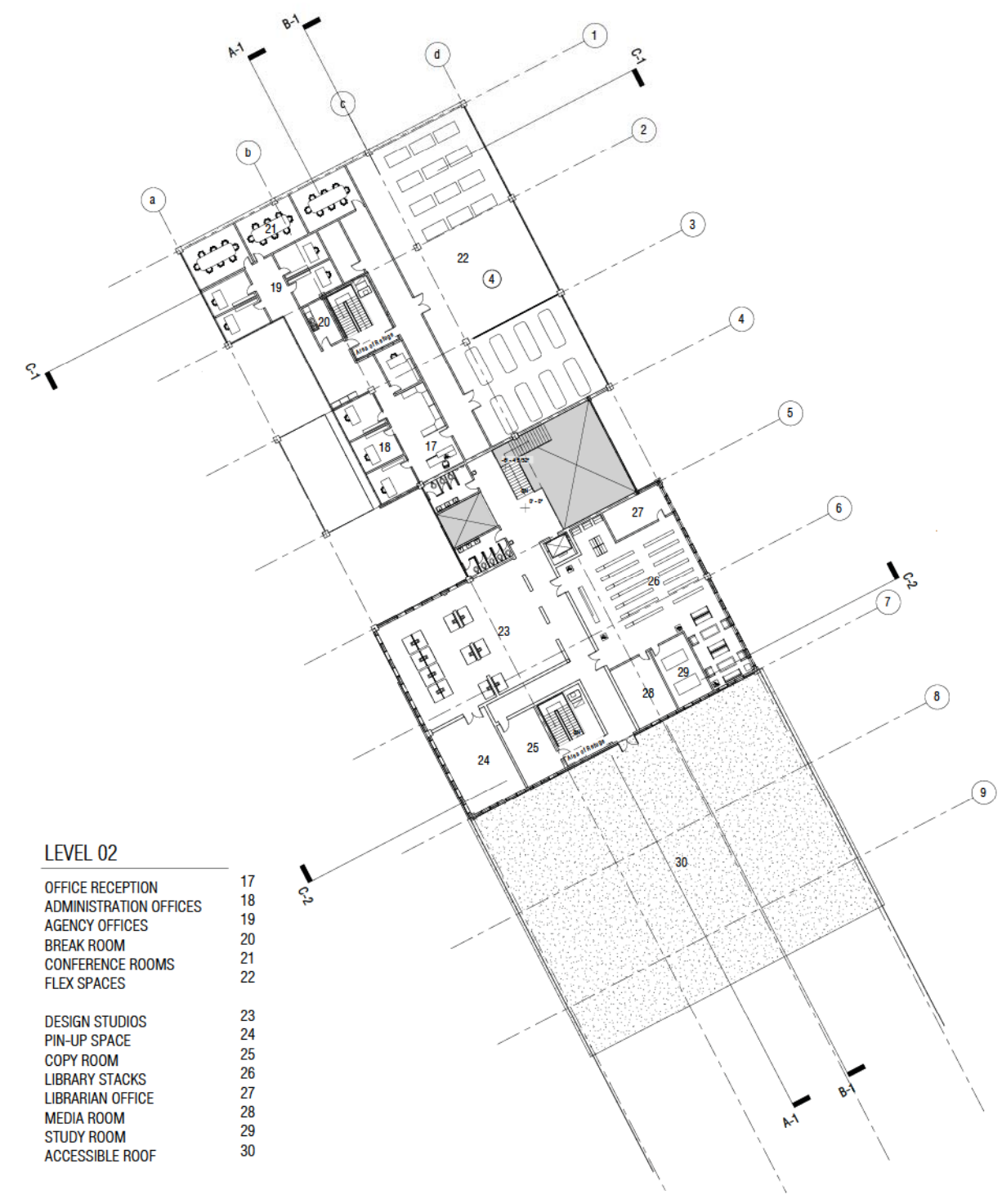
Volume acts as a collector, as it accommodates more organized program. Spaces are designed with intention of gathering for extended amounts time.



LEVEL 01

- MAIN LOBBY 1
- STREETSIDE PLAZA 2
- GALLERY 3
- CISTERN 4
- CAFE 5
- FOOD PREP 6
- OUTDOOR CAFE 7
- FIRESTAIR 8
- BOOKSTORE 9
- MENS RESTROOM 10
- WOMENS RESTROOM 11

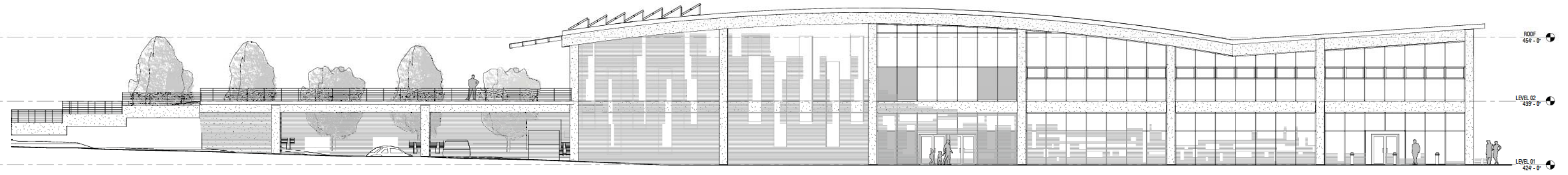
- AUDITORIUM 12
- A/V ROOM 13
- MEETING ROOMS 14
- LOADING DOCK 15
- GREEN HOUSES 16



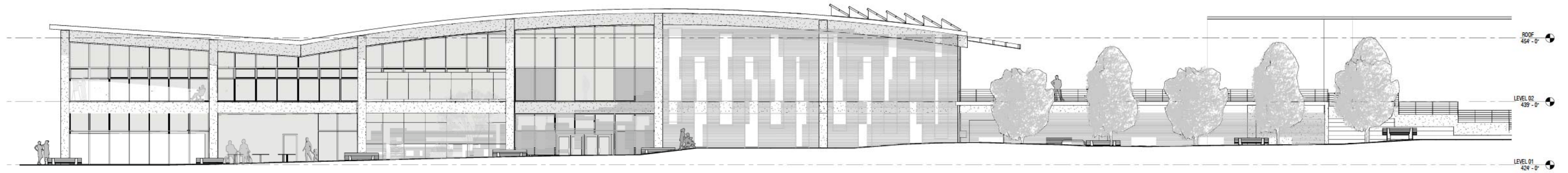
LEVEL 02

- OFFICE RECEPTION 17
- ADMINISTRATION OFFICES 18
- AGENCY OFFICES 19
- BREAK ROOM 20
- CONFERENCE ROOMS 21
- FLEX SPACES 22

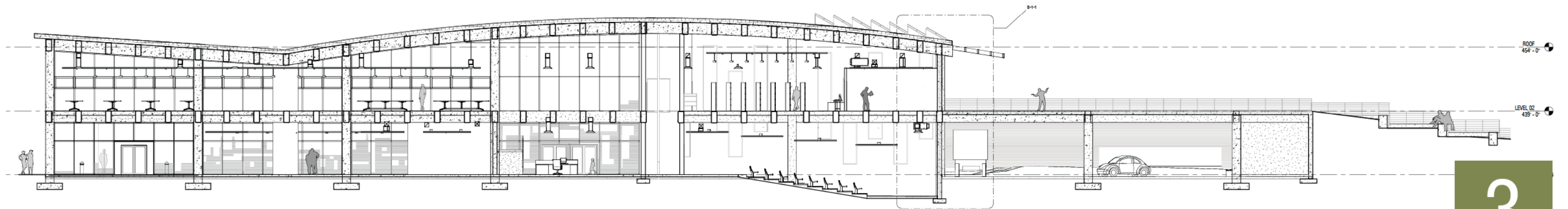
- DESIGN STUDIOS 23
- PIN-UP SPACE 24
- COPY ROOM 25
- LIBRARY STACKS 26
- LIBRARIAN OFFICE 27
- MEDIA ROOM 28
- STUDY ROOM 29
- ACCESSIBLE ROOF 30



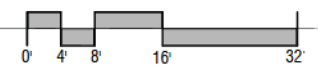
6TH ST. ELEVATION

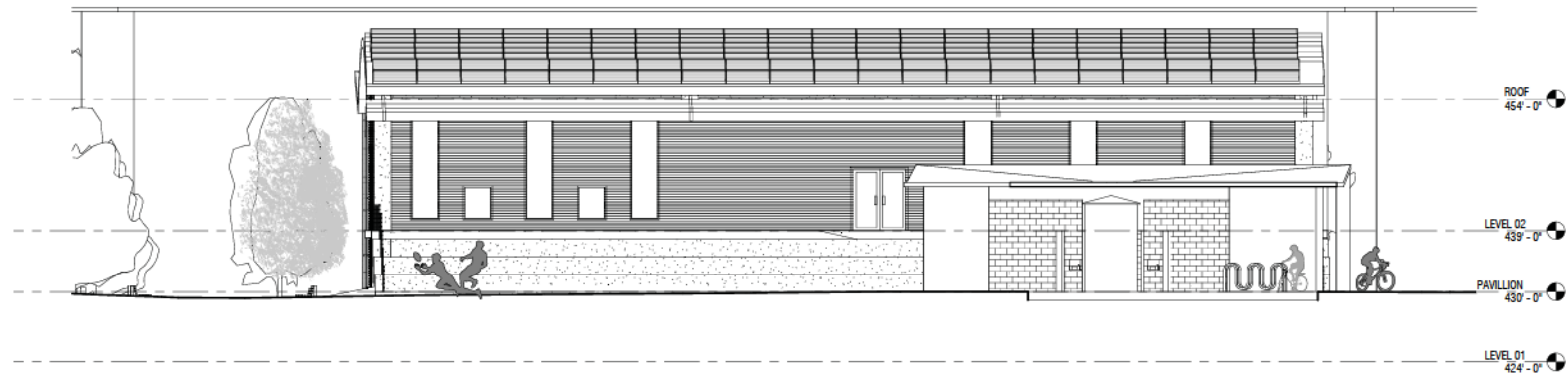


LAFAYETTE ST. ELEVATION

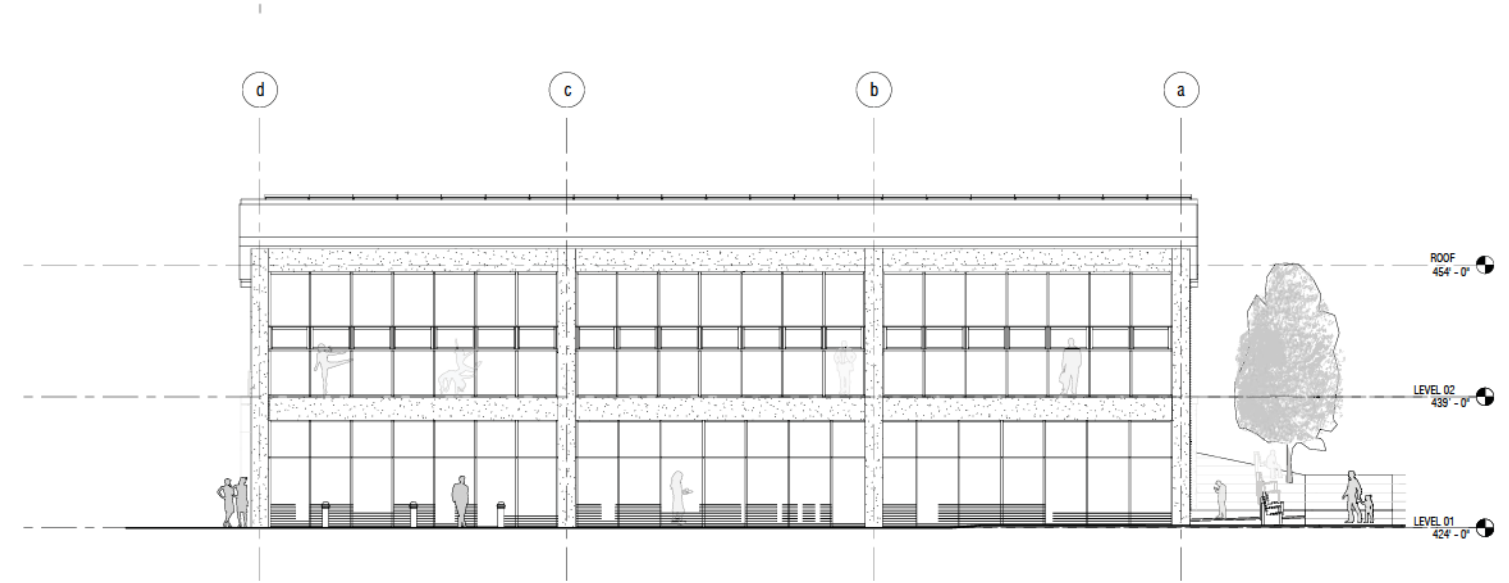


SECTION B-1

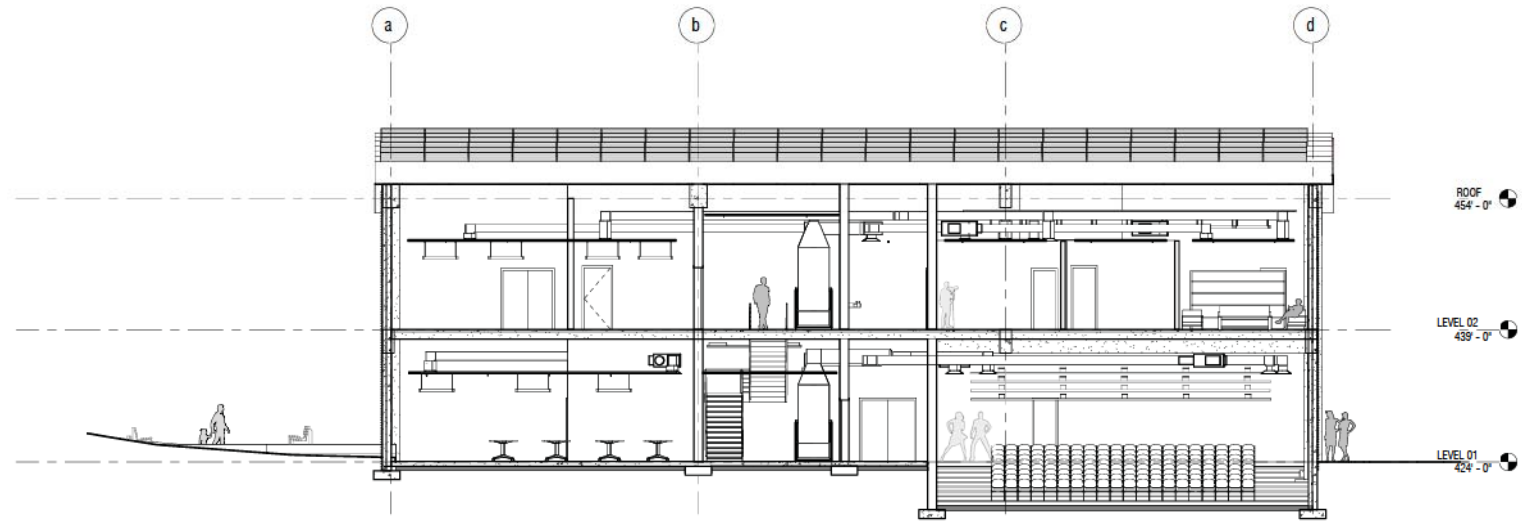




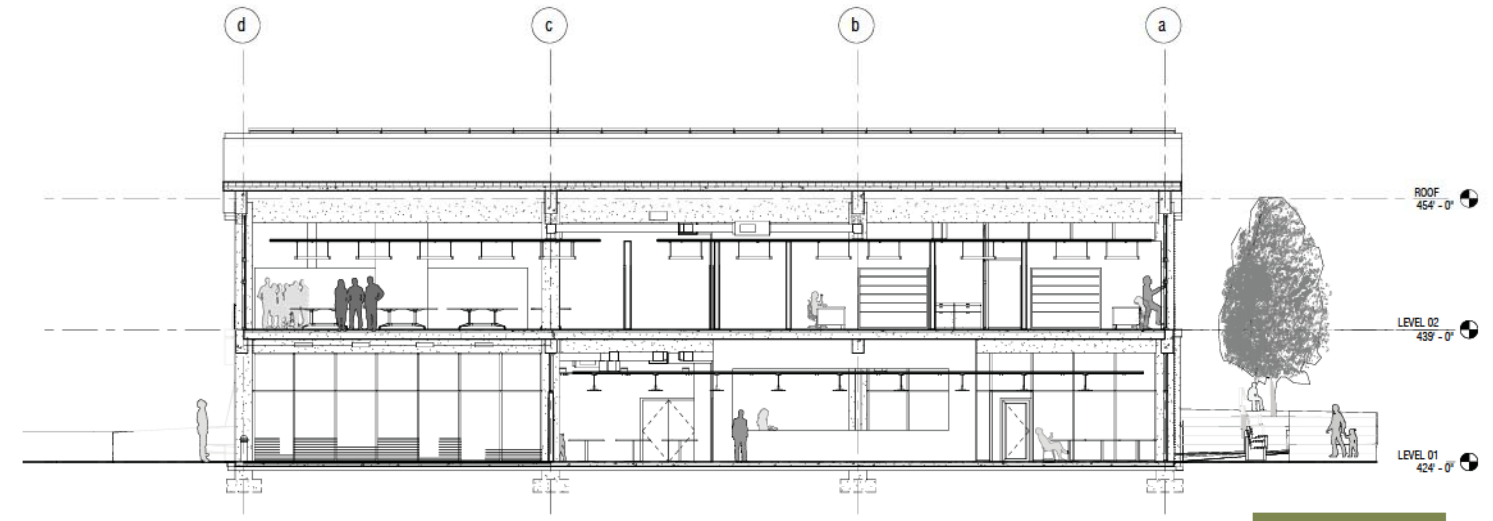
SOUTH ELEVATION



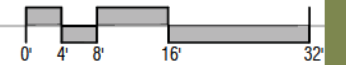
PEABODY ELEVATION

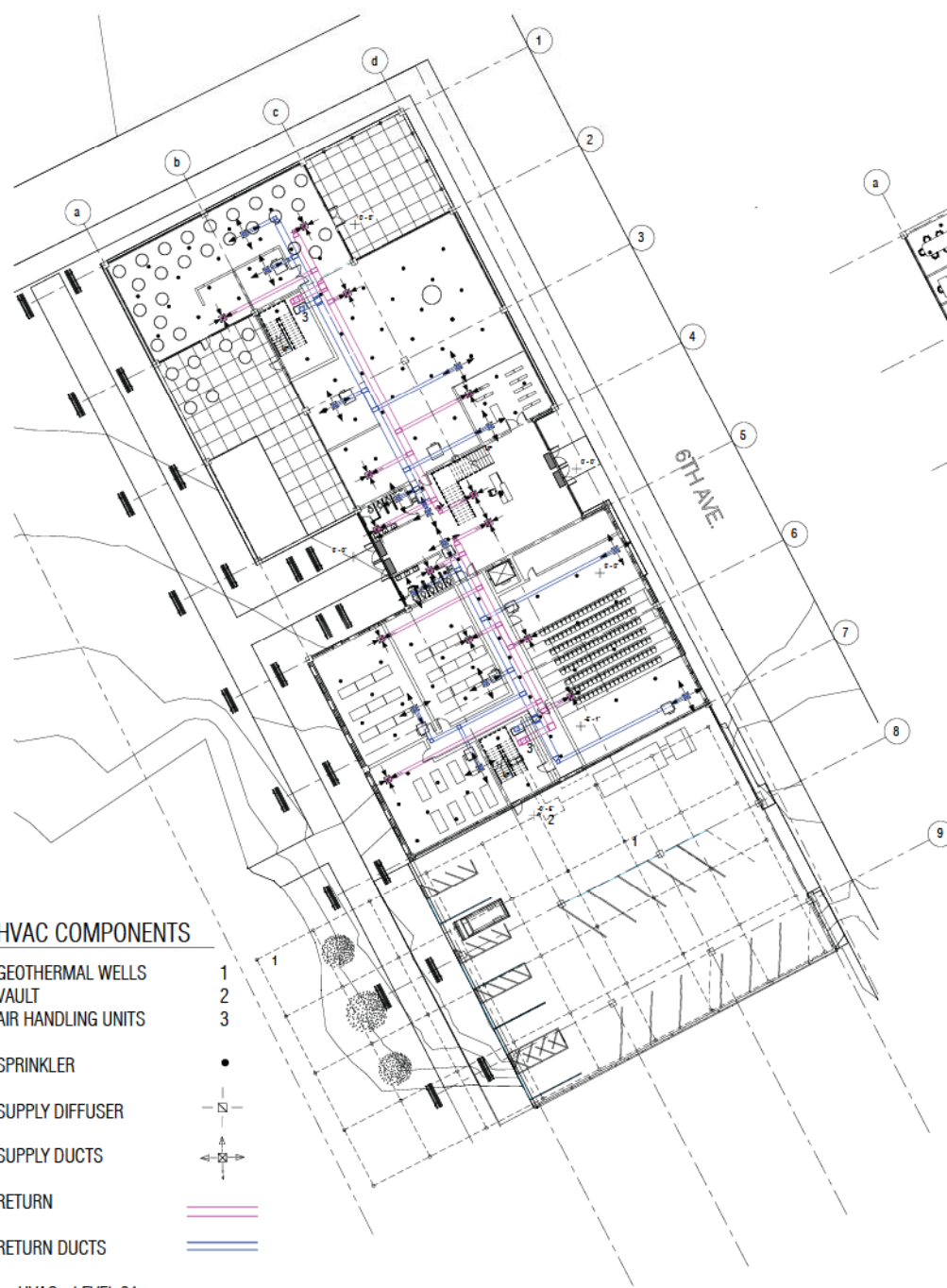


SECTION C-2



SECTION C-1





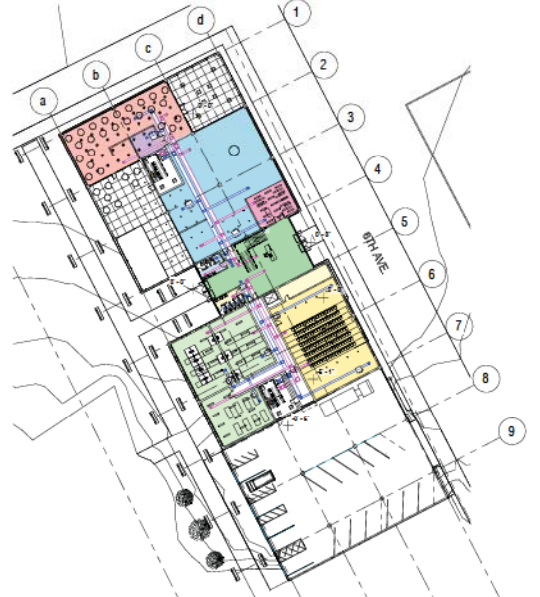
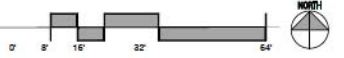
HVAC COMPONENTS

- GEOTHERMAL WELLS 1
- VAULT 2
- AIR HANDLING UNITS 3
- SPRINKLER •
- SUPPLY DIFFUSER —□—
- SUPPLY DUCTS —→—
- RETURN —←—
- RETURN DUCTS —=—

HVAC - LEVEL 01



HVAC - LEVEL 02



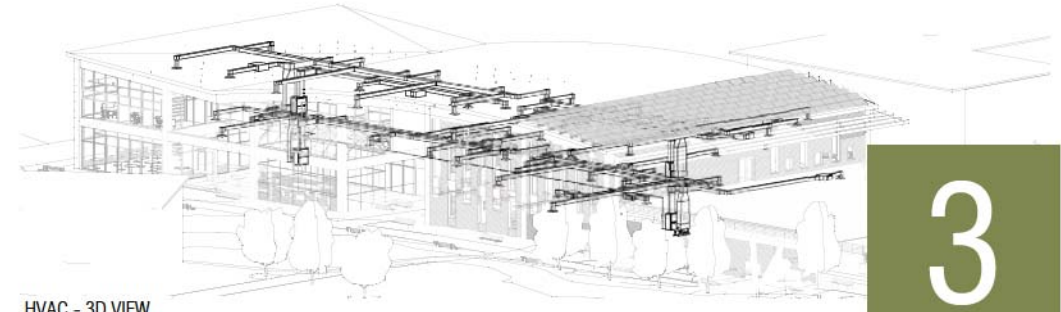
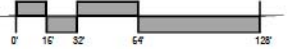
HVAC ZONES - LEVEL 01



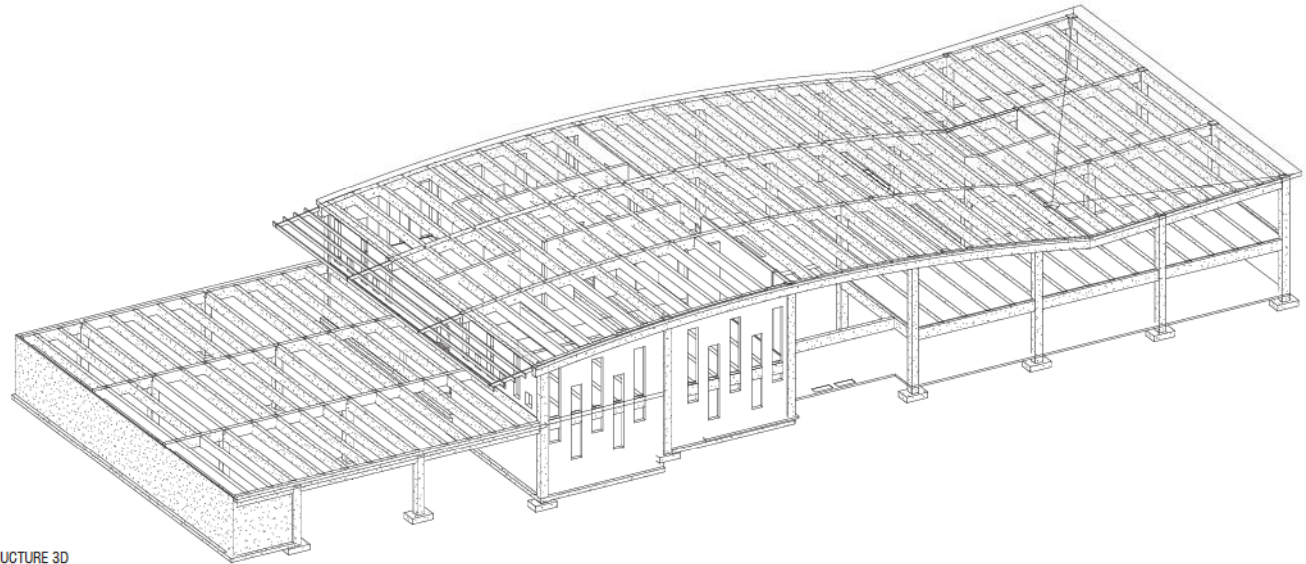
HVAC ZONES - LEVEL 02



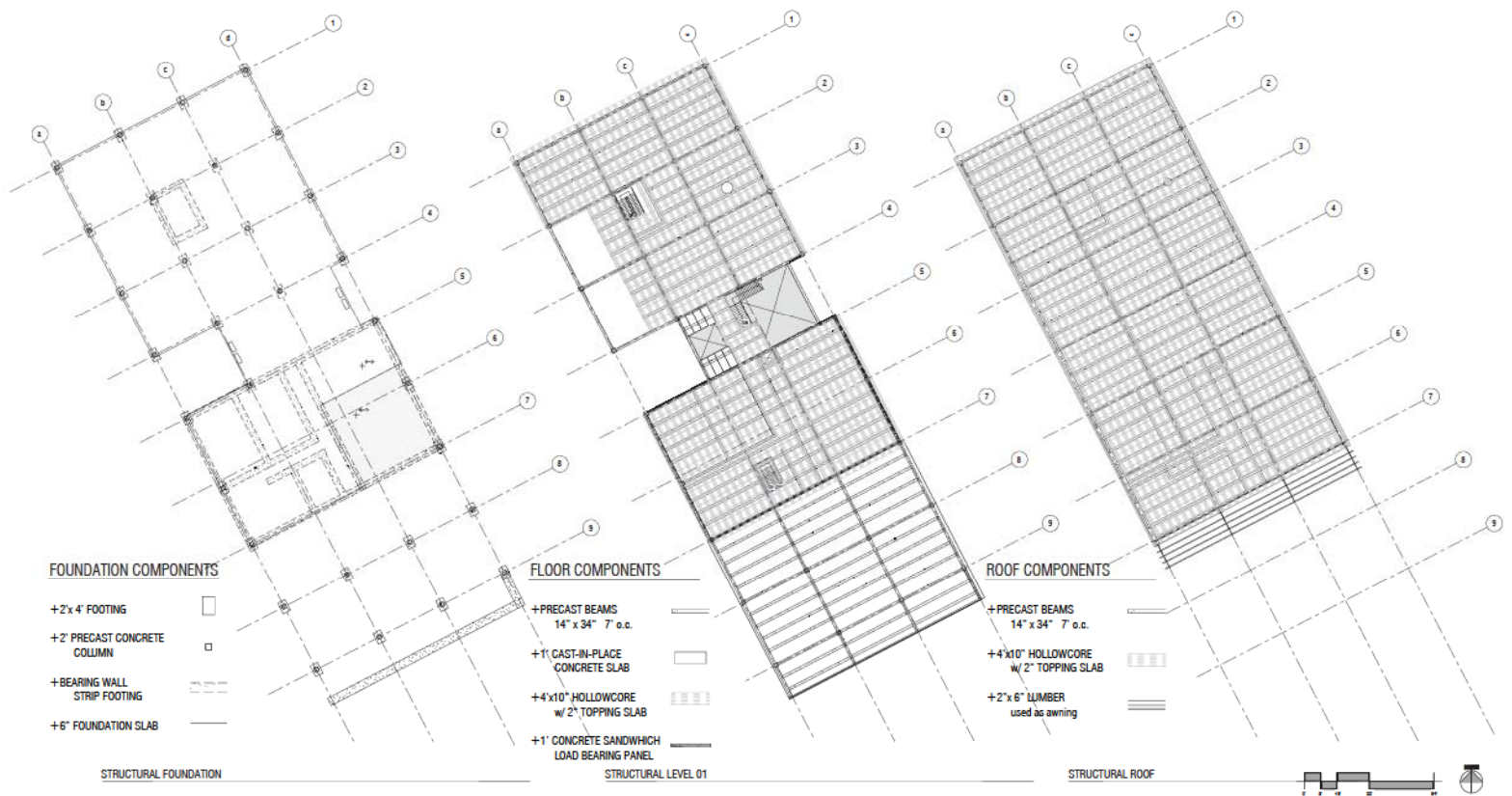
HVAC SECTION



HVAC - 3D VIEW



STRUCTURE 3D



- FOUNDATION COMPONENTS**
- +2'x4' FOOTING
 - +2' PRECAST CONCRETE COLUMN
 - +BEARING WALL STRIP FOOTING
 - +6" FOUNDATION SLAB

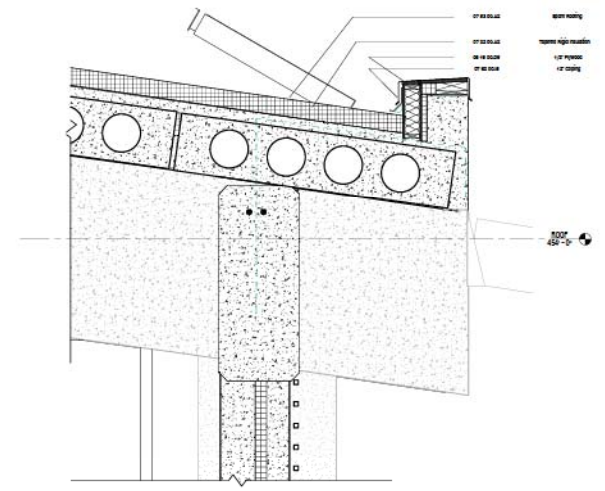
- FLOOR COMPONENTS**
- +PRECAST BEAMS 14" x 34" 7' o.c.
 - +1' CAST-IN-PLACE CONCRETE SLAB
 - +4'x10" HOLLOWCORE w/ 2" TOPPING SLAB
 - +1' CONCRETE SANDWICH LOAD BEARING PANEL

- ROOF COMPONENTS**
- +PRECAST BEAMS 14" x 34" 7' o.c.
 - +4'x10" HOLLOWCORE w/ 2" TOPPING SLAB
 - +2'x6" LUMBER used as sawing

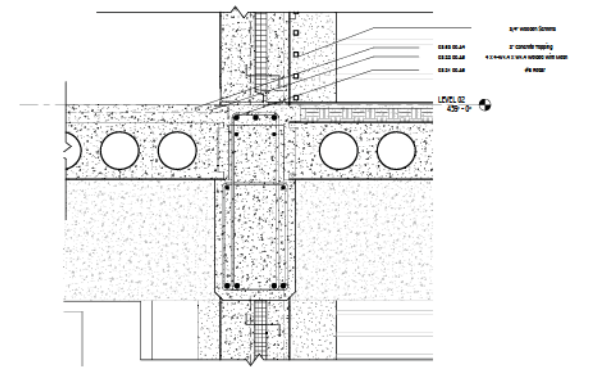
STRUCTURAL FOUNDATION

STRUCTURAL LEVEL 01

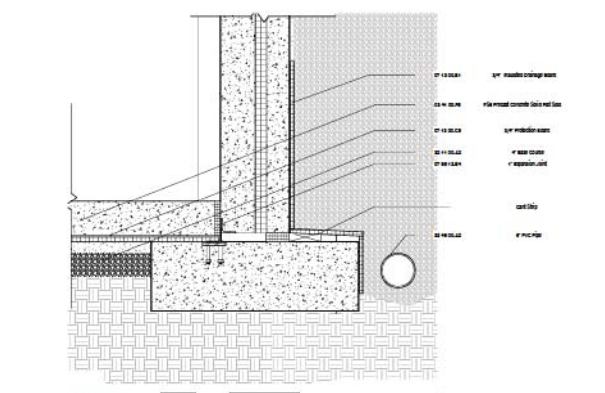
STRUCTURAL ROOF



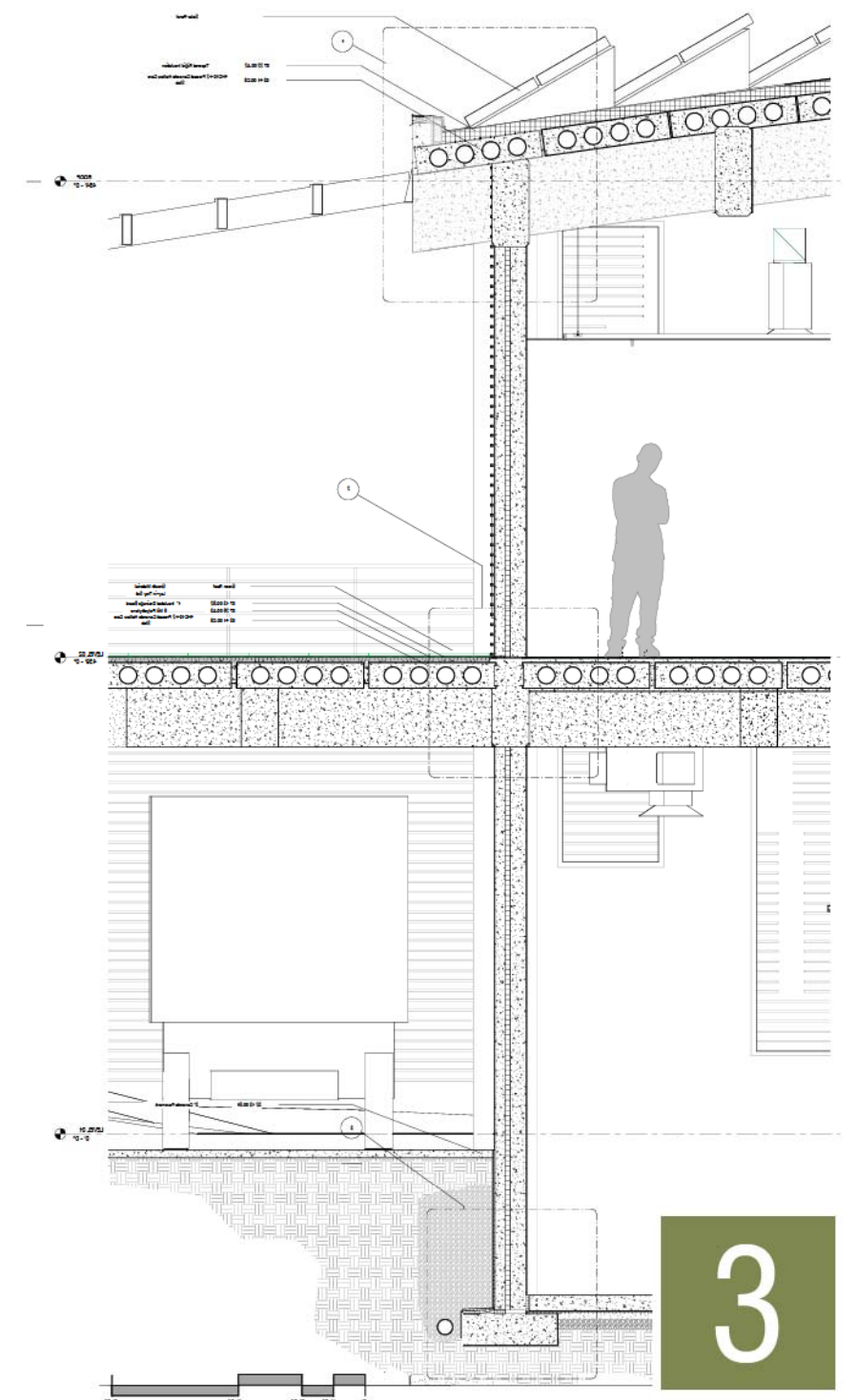
DETAIL 1



DETAIL 2



DETAIL 3



Transit Oriented Development

"Always design a thing by considering it in its next larger context - a chair in a room, a room in a house, a house in an environment, an environment in a city plan."

- Eero Saarinen

Studio:

Fourth Year, Second Semester, Spring 2010

Collaborative Proposal with students from
Vanderbilt School of Business

Professor:

T. K. Davis

Site:

Gallatin, Tennessee

Project Description:

Working with a plan established by Nashville to enact a commuter and light rail route to surrounding communities, destinations were proposed. This transit oriented community is designed to have all residents need within a mile radius (walking distance).

Project Summary

This project proposes a Transit Oriented Development just outside downtown Gallatin, Tennessee. The New Town Development is centered on a transit stop and expands to encompass a half-mile walking distance. Right now the plan is proposing a Bus Rapid Transit stop but could be easily converted to Light Rail or Commuter Rail. The town was developed with the ideals of the old British town in mind, keeping a defined edge to limit the likelihood of sprawl, and incorporating many public scale green spaces reminiscent of the Poundbury masterplan by Leon Krier. There is currently a large Gap Clothing Company distribution center located just south of the site that employs nearly 1000 people, with the Volunteer State Community College just south of that.

The design focuses on a large quad space that stretches from the transit stop to the proposed school. There are many public facilities located in the quad to engage the people of the town and encourage an active environment. Some of these include a bike shop where people could rent or buy bikes located just off the greenway, a place to rent canoes near the main pond, and a daycare.

There is also an urban farm located in the main quad. This is a facility where members of the community can purchase a plot to plant grains and vegetables. Connected to the plots is a farmers market where the fresh food grown there can be sold to the public. Located next to the market is a small café and restaurant that would also purchase products from the urban farm.

Harris Lane, which currently connects US 31 and Vietnam Veterans Blvd has been widened and converted to the developments main boulevard. Part of the greenway is carried through the main median

on the boulevard from the east end of the development to the western office park. The boulevard is anchored in the eastern direction at a water basin and community area, and in the west at the large commercial center.

Some amenities of the development include a sports complex which hosts tennis and basketball courts, a baseball field, and a soccer field, a swimming complex, and an existing equestrian that has been updated and expanded. The quad also contains a large amphitheater for public gatherings and town meetings.

Phase 3 of development proposes an office park just east of the Gap complex. These buildings would be generic office buildings to accommodate a large variety of tenants.

There are four main types of housing proposed in the development, courtyard style apartment buildings, wuferhauses, row houses, and urban villas. Phase 1 would see the development of the wuferhauses in full, and the courtyard building along the boulevard. Phase 2 would contain roughly half of the developments row housing, and Phase 3 would bring the urban villas and the remaining row houses. Units were created to have a first floor of commercial development and remaining residential adding a lot of mixed-use opportunities.

Project Summary

Commercial Space (Phase 1)

(2) Big Box at 80,000 sqft	Total = 160,000 sqft
(4) Restaurant Block at 4,800 sqft	Total = 19,200 sqft
(54) Wuferhaus (North on Boulevard) at 2,100 sqft	Total = 113,400 sqft
Courtyard Building (Near Transit)	Total = 122,580 sqft
Total Commercial: 415,180 sqft	

Housing Space (Phase 1)

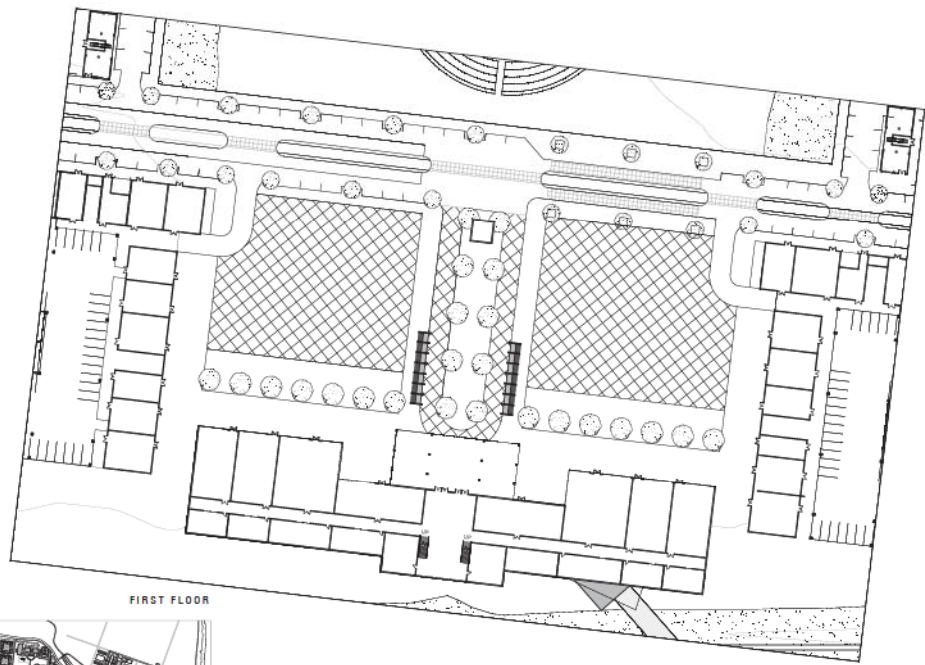
Wuferhaus (North on Boulevard) (216) 2 Br Units at 840 sqft	Total = 181,440 sqft
Courtyard Building	
(12) 2 Br units at 875 sqft	Total = 10,488 sqft
(75) 1 Br units at 450 sqft	Total = 33,750 sqft
(12) Studio units at 390 sqft	Total = 4,680 sqft
(2) Courtyard Buildings in Phase 1	Total = 97,836 sqft
Courtyard Building (Near Transit)	
(184) Studio units at 650 sqft	Total = 119,600 sqft
(94) One Br units at 800 sqft	Total = 51,200 sqft
(36) Two Br units at 1,150 sqft	Total = 41,400 sqft
Total Housing: 461,476 sqft	

Acerage

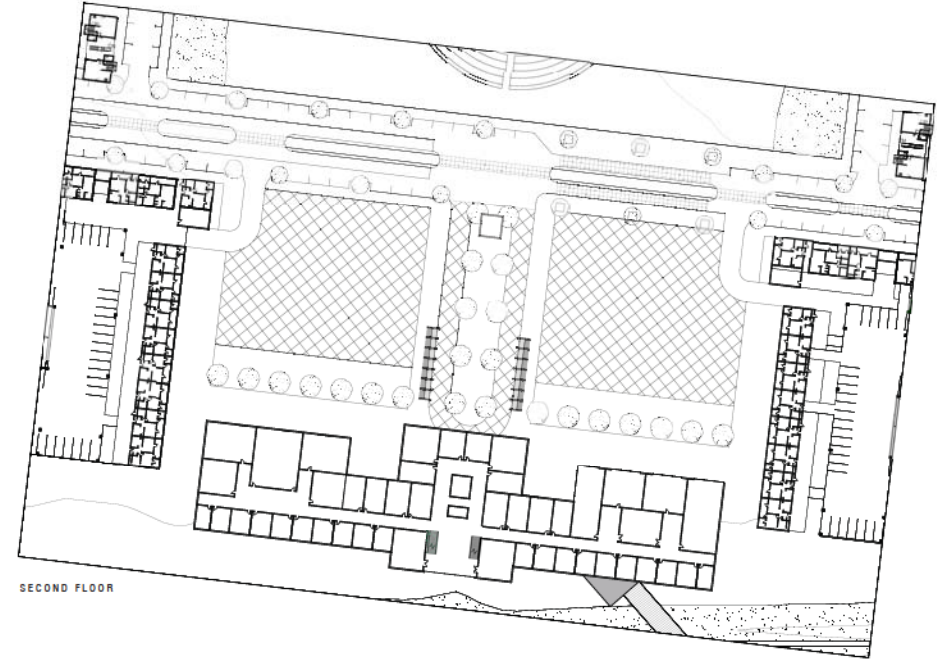
Phase 1	Total = 88 acres
Full Build Out	Total = 262 acres

Transit Oriented Development

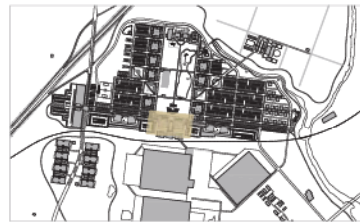




FIRST FLOOR



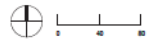
SECOND FLOOR



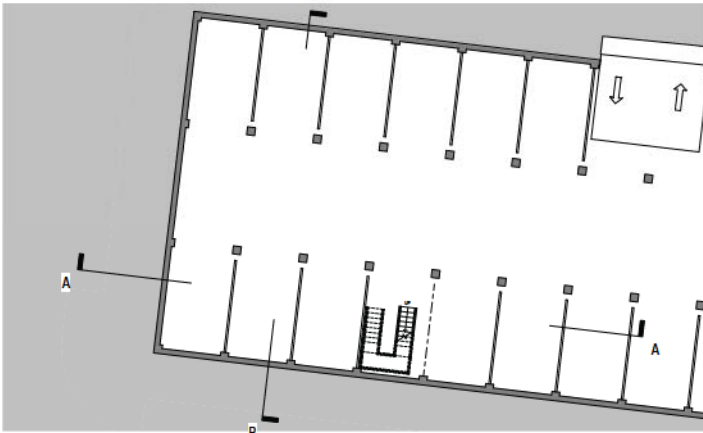
SECTION A



SECTION B



BLOCK PLAN_VILLAGE INN AND COURTYARD BUILDING



PARKING



FIRST FLOOR

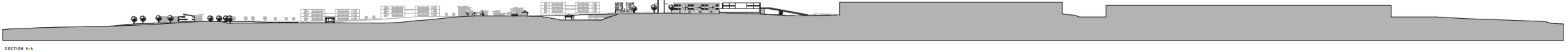
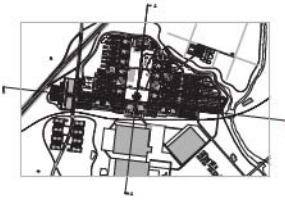


SECOND FLOOR

UNIT PLAN_WUFERHAUS



THIRD FLOOR

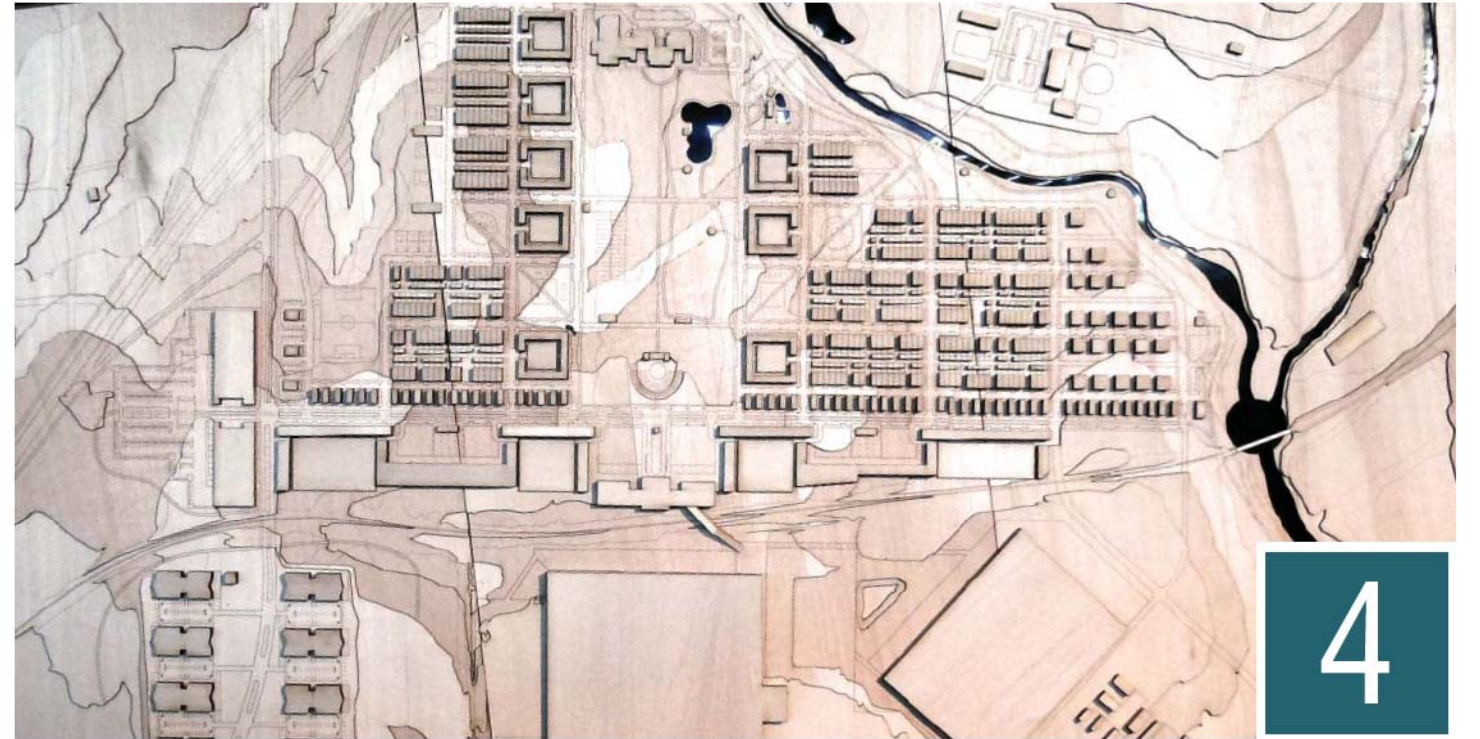
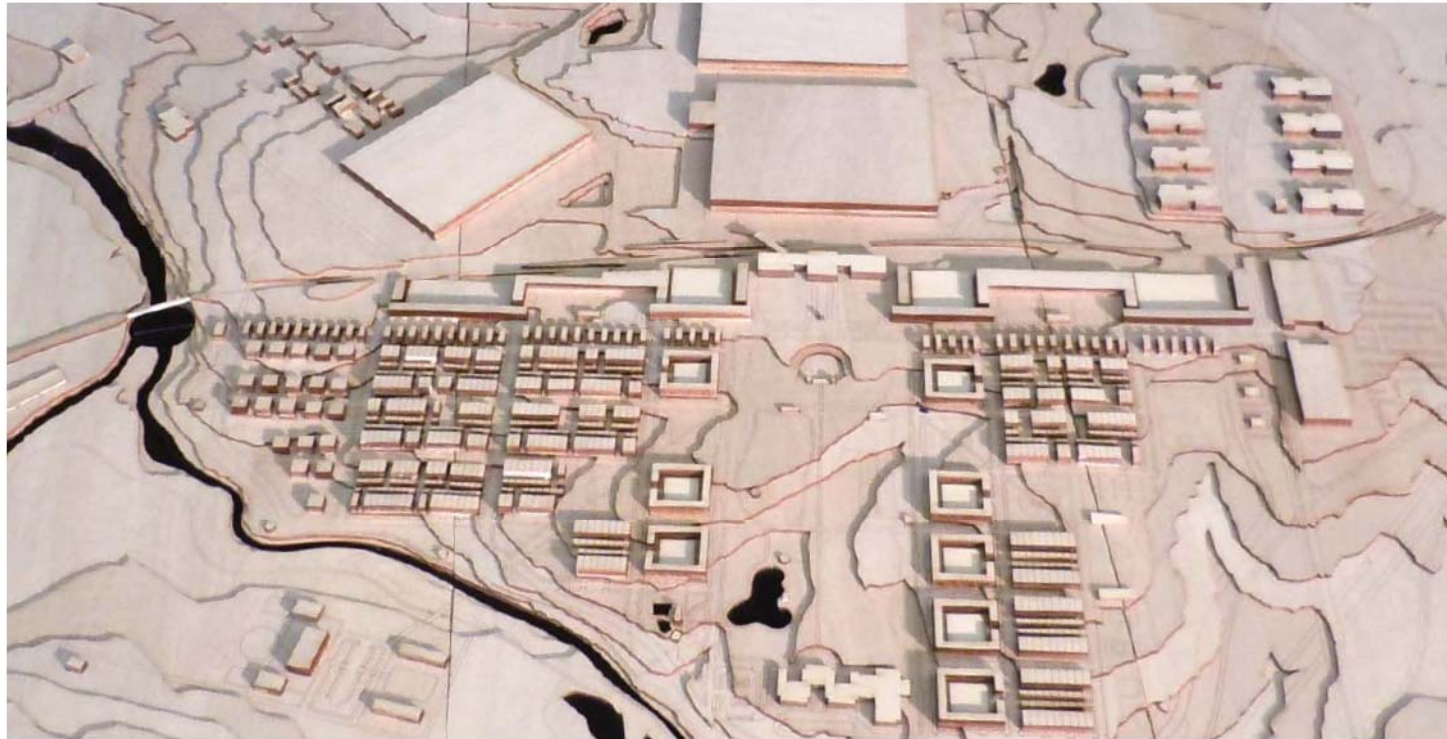


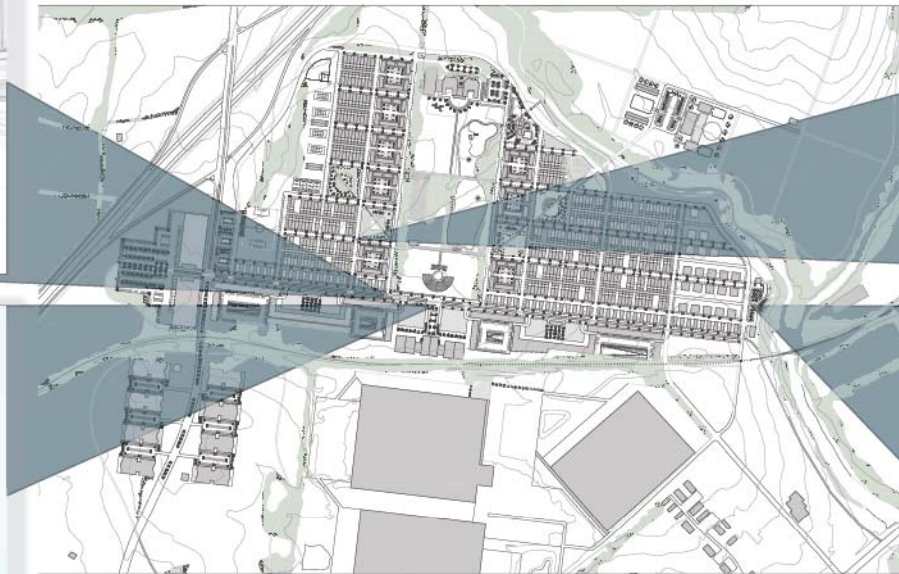
SECTION A-A



SECTION B-B

⊕ ——— SITE SECTIONS





Proun Project

"Architecture can't fully represent the chaos and turmoil that are part of the human personality, but you need to put some of that turmoil into the architecture, or it isn't real."

- Frank Stella

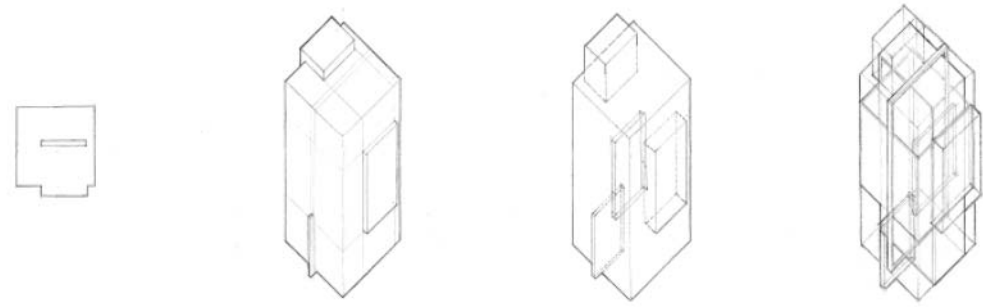
Studio:
Second Year, First Semester, Fall 2007

Professor:
C. A. Debelius

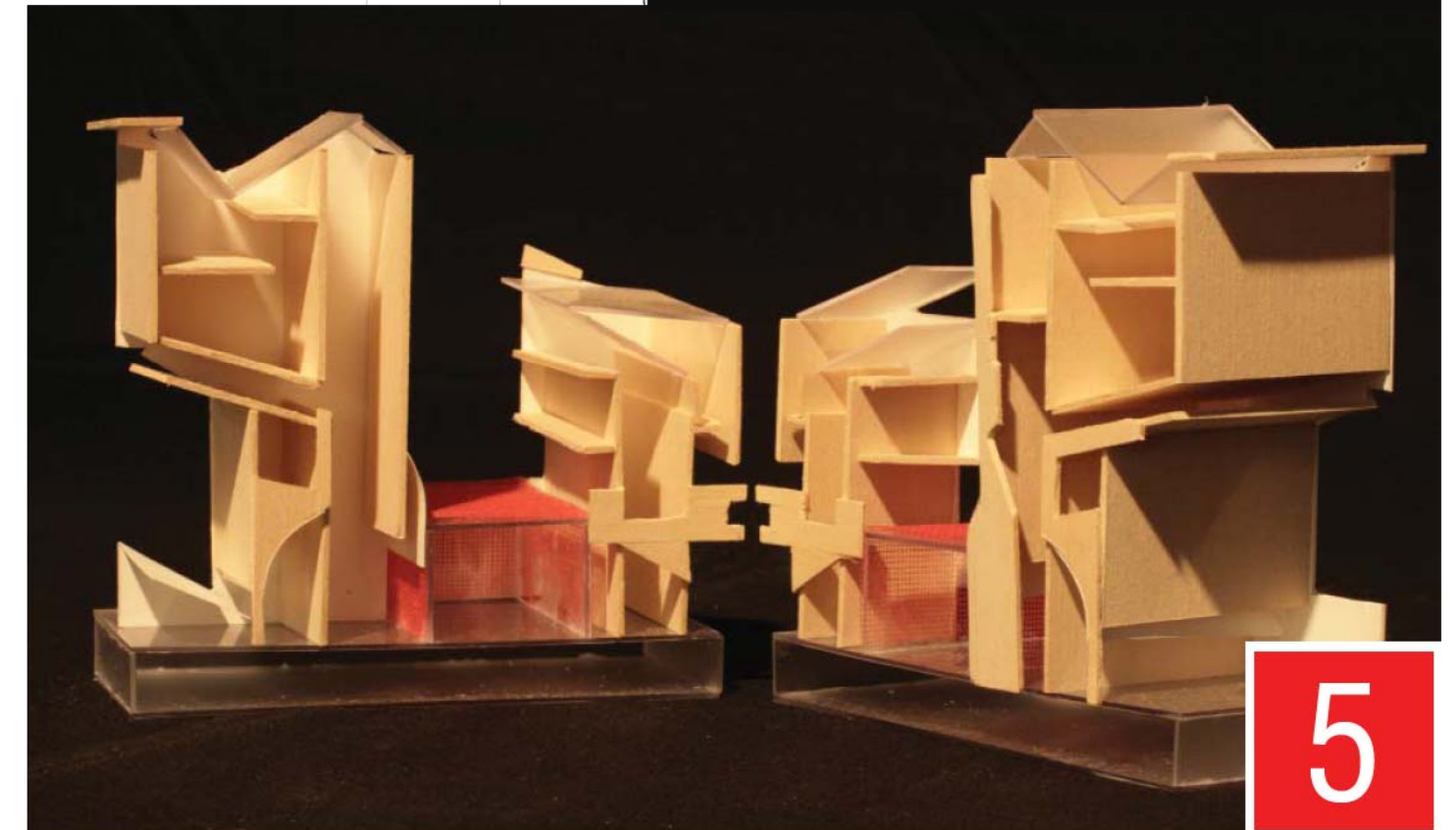
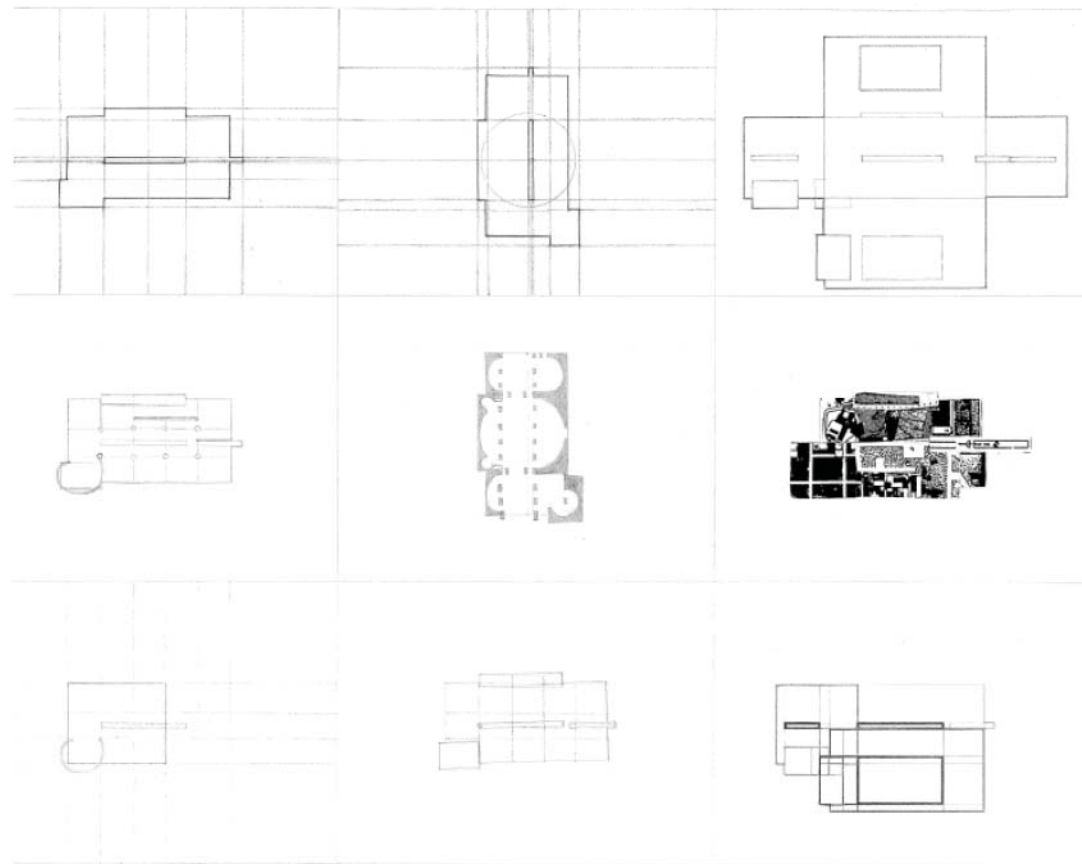
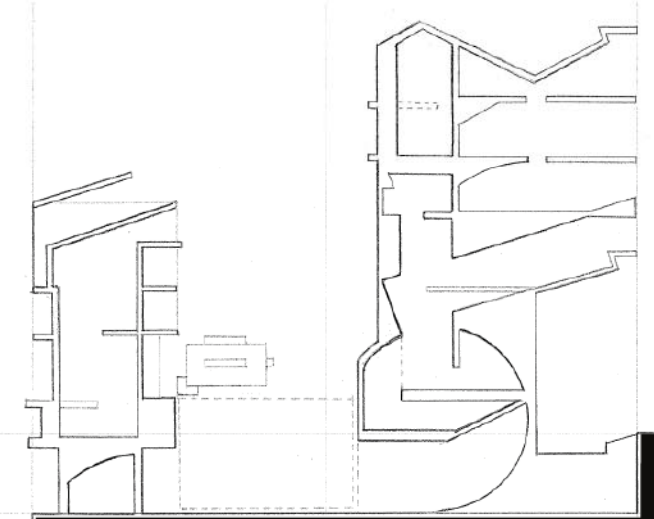
Project Description:

This design project explored various relationships in plan and section. Using intersecting planes, an interpreted hierarchal space is created at the point of intersection. These drawings were ultimately exercises in spatial design.





These painted boxes were diagrams of the intersecting planes. Act as if the constructed box has the projections from each different plane moving through it, the created space is illustrated by the white on each side. After exploring these intersecting relationships and sectional drawings, we constructed a model.



Paintings and Process

"...more stress upon the process through which perfection was sought than upon perfection itself."

- Okakura Kakuzo *The Book of Tea*, 1956

I have been painting since high school. I was able to continue taking painting studio at University of Tennessee. I recently held a show downtown, at Gallery 1010.

Paintings:

In my paintings, I take photographs of natural distortions- usually water reflections. I crop these images to find abstract moments that occur in real life. These moments, captured and painted, maintain a sense of mystery, allowing the viewer to escape within them.

Process:

Process is an important part of my work. Not only in painting, but also in architecture and other things I produce. Striving for perfection, in every step, creates the greatest of outcomes.

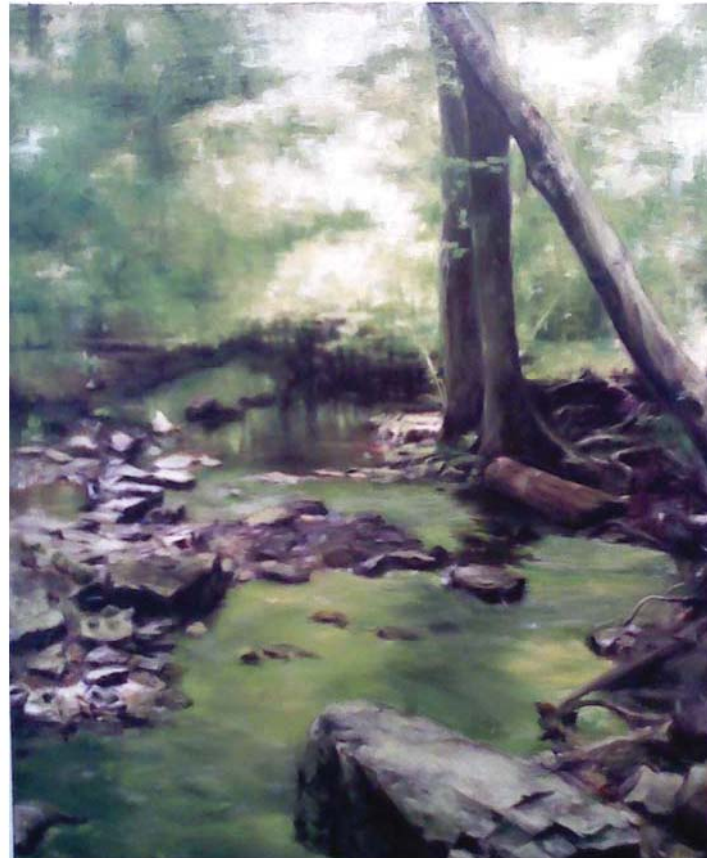


commissioned portrait, 2009
2' x 3' [oil on canvas]

*"To be truly artistic, a work must also be
esthetic- that is, framed for enjoyed receptive
perception"*

- John Dewey, *Art As Experience*

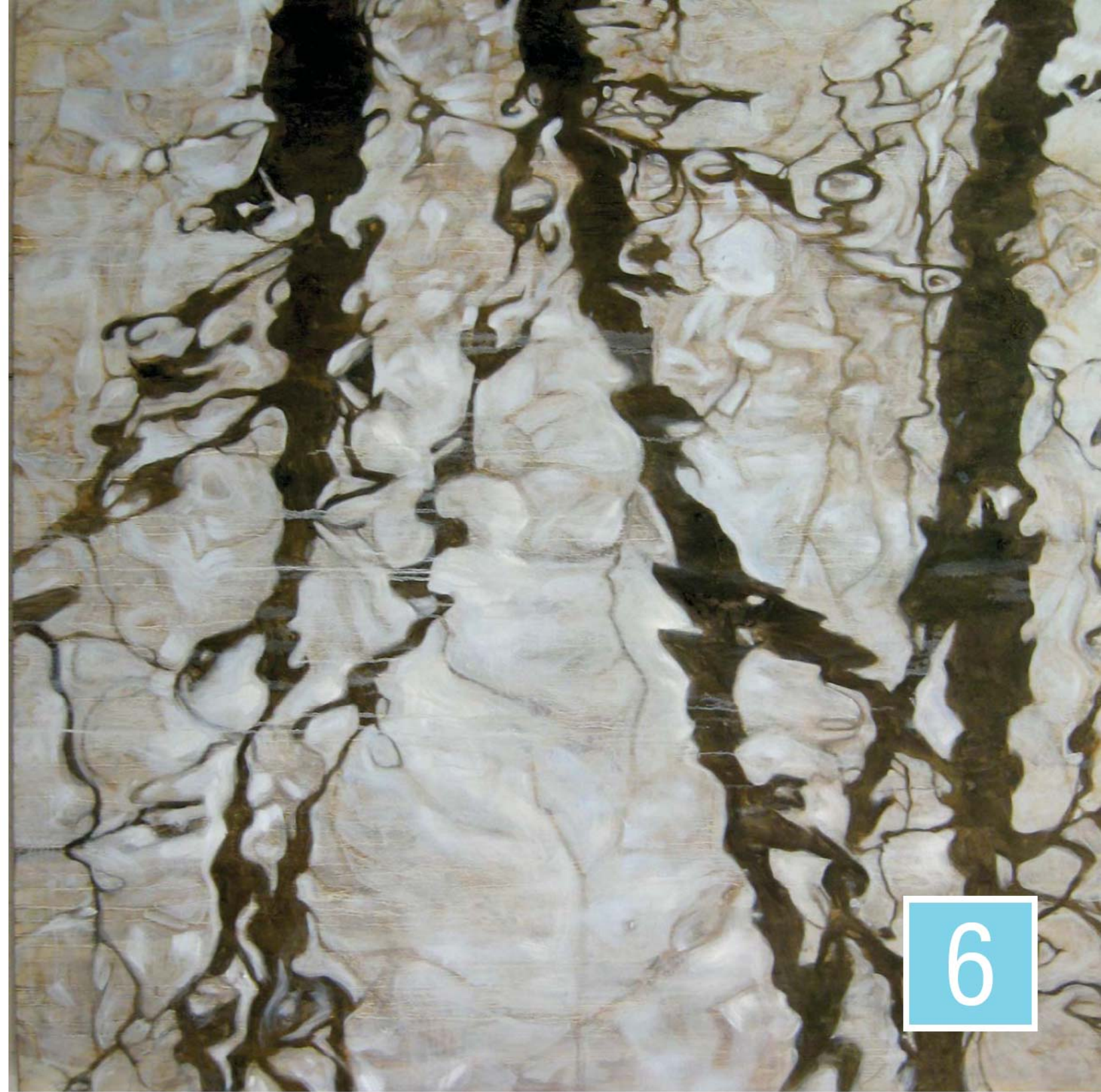
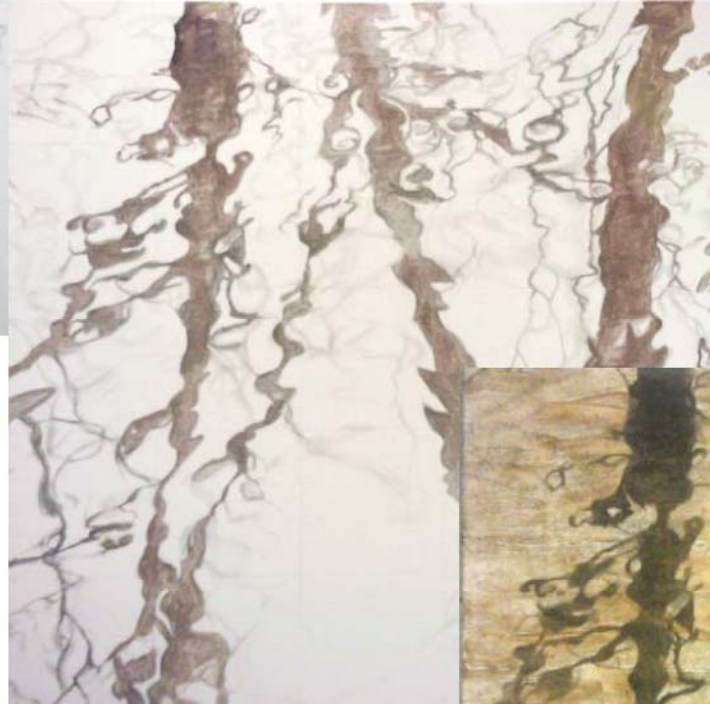
Stillhouse Falls, 2009
4' x 5' [oil on canvas]



Hierarchy, 2010
18" x 24" [acrylic on laser cut-plexi, mounted onto oil on canvas]

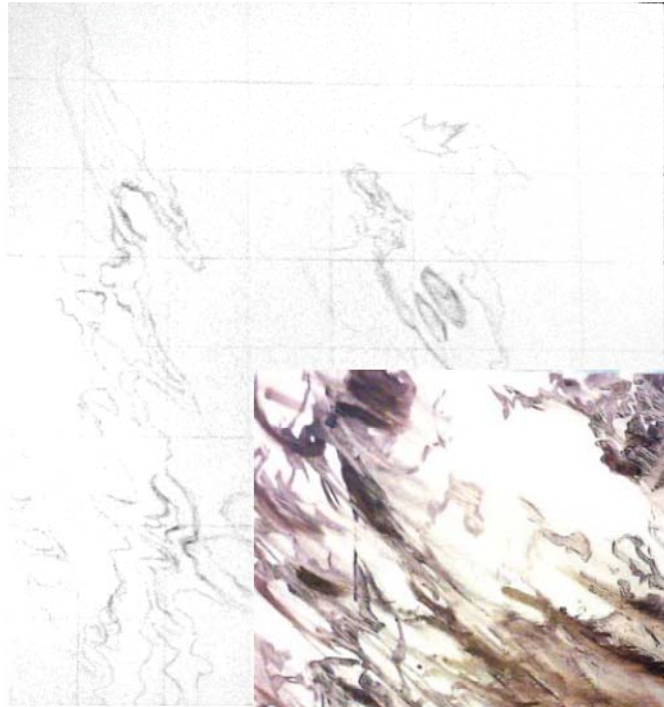


Threeforms, 2010
5' x 5' [oil on canvas]



"Art resides in the quality of doing, process is not magic."

-Charles Eames



Green, 2010
5' x 5' [oil on canvas]





Bridge, 2010
4' x 4' [oil on canvas]





Venice, 2008



Venice I, 2008
9" x 12" [oil on canvas]



Canal, 2011
16" x 20" [oil on canvas]



I consider my baking to be a science, changing variables to alter the end product. These paintings, pies, and pastries are all products that I create for the enjoyed reception of others.

No matter if you are creating baked goods, paintings, or architecture, quality during the process is critical to quality in the product.

Thank you for the opportunity to share some of my work with you.

Sincerely,

James C. Sloan

“Memories of my father’s ranch underlie all my work, and my work feeds on the idea of transposing these distant, nostalgic longings to the contemporary world.”

- Luis Barragan

